



Spare Parts Catalog

16 S 2220 TO

Material number: 1367.002.030



Pos.	Information	Amendment number
001	Use case -----	
002	Customer IVECO MAGIRUS AG	
003	City Neu-Ulm	
004	DUNS 31-561-9072	
005	Vehicle / Apparatus -----	
006	Sales Name STRALIS AS/S.AD/AT	
007	Manufacturer IVECO MAGIRUS AG	
008	Engineering Name	
009	Product Use TRUCK	
010	Vehicle/Hardware Type ROAD TRACTOR	
011	SOP	
012	Engine	
013	Sales Designation	
014	Manufacturer IVECO FIAT SPA	
015	Eng.Displ.	
016	Cylinder	
017	Nom. power 331 kW	
018	RPM at nom. power 2100 1/min	
019	Nom. torque 2100 Nm	
020	RPM at nom. torque 1050 1/min	
021	Classification use case -----	
026	DYNAMIC TYRE RADIUS 447 mm	
027	REAR AXLE RATIO 2.93	
031	PERMISS.GROSS VEHICLE WEIGHT 26 t	
032	PERMISS.GROSS COMBIN.WEIGHT 60 t	
033	Use case -----	
034	Customer IVECO MAGIRUS AG	
035	City Neu-Ulm	
036	DUNS 31-561-9072	
037	Vehicle / Apparatus -----	
038	Sales Name TRAKKER	
039	Manufacturer IVECO MAGIRUS AG	



Pos.	Information	Amendment number
040	Engineering Name	
041	Product Use TRUCK	
042	Vehicle/Hardware Type ROAD TRACTOR	
043	SOP	
044	Engine	
045	Sales Designation	
046	Manufacturer IVECO FIAT SPA	
047	Eng.Displ.	
048	Cylinder	
049	Nom. power 331 kW	
050	RPM at nom. power 1900 1/min	
051	Nom. torque 2200 Nm	
052	RPM at nom. torque 1000 1/min	
053	Classification use case -----	
058	DYNAMIC TYRE RADIUS 490 mm	
059	REAR AXLE RATIO 3.79	
063	PERMISS.GROSS VEHICLE WEIGHT 38 t	
065	Product description -----	
066	INSTALLATION POS TRANSMISSION HORIZONTAL LEFT	
067	TRANSMISSION ATTACHMENT FLANGE-MOUNTED	
073	NUMBER OF GEARS 16	
074	RATIO, BOTTOM GEAR 13.8	
075	RATIO, TOP GEAR .84	
076	SET OF RATIOS SG	
077	NOTE ON TYPE OF GEAR SHIFT SYS TURNING SHAFT	
078	POSITION, GEAR SHIFT SYSTEM HORIZONTAL LEFT	
079	DESIGN, SHIFT PATTERN H-H	
080	VERSION SHIFT SUPPORT SERVO	
081	VERSION ACTUATION SHIFT SYSTEM MECHANICAL	
082	DESIGN, SHIFT SYSTEM MECHANICAL	
083	DESIGN PSE PSE1	
084	DESIGN PSE WITH VALVE SAV6	



Pos.	Information	Amendment number
086	MAIN CUTOFF VALVE WITH	
087	NO. TAPPETS MAIN CUTOFF VALVE 2	
088	POS. AIR CON MAIN CUTOFF VALVE G	
089	DESIGN 1TH GEAR/REVERSE GEAR FORK	
090	DESIGN AIR SHUT-OFF ELEK SAV 6	
091	DIA.THROTTLE VALVE AIR SUPPLY 1.3 mm	
092	SELECTION PATTERN VARIANT GEAR SHIFT PATTERN 1	
093	VERSION OF SYNCHRONIZER 1 1+2 GEAR BK-SYNCHR.MOLYBDAEN	
094	VERSION OF SYNCHRONIZER 2 3+4 GEAR BK-SYNCHR.MOLYBDAEN	
095	REFERENCE LENGTH INPUT SHAFT 117 mm	
096	STANDARD TYPE INPUT SHAFT SAE	
097	NUMBER OF WEDGES INPUT SHAFT 10	
098	VERSION OF INPUT SHAFT FORM C	
099	NOMINAL DIAMETER INPUT SHAFT 2 in	
100	DIAMETER, JOURNAL, INPUT SHAFT 25 mm	
101	TYPE FIT SPIGOTS INPUT SHAFT F7	
102	VER. BEAR. SPIGOTS INPUT SHAFT TAPER ROLLER	
105	DESIGN,CONN., CLUTCH HOUSING SAE 1	
106	CENTR.DIA,HSG/ENGINE CONNECT. 511.175 mm	
107	NUMBER OF BORES,ENGINE CONN. 12	
108	BORE DIA, ENGINE CONNECTION 11 mm	
109	DESIGN, RELEASE SHAFT	
110	WIDTH ACROSS FLATS,RELEAS.FORK 116 mm	
113	REF.LENGTH,RELEASE BEAR.FLAN -24.2 mm	
114	DIAMETER, RELEASE FLANGE 62.62 mm	
115	DESIGN RELEASE CYLINDER WITHOUT GROOVE	
116	OUTER DIA. OUTPUT FLANGE RA 180 mm	
117	NO.OF BORES OUTPUT FLANGE HA1 4	
119	BORE DIA. OUTPUT FLANGE RA 15 mm	
123	CORROS.PROTECTION, OUTP.FLANGE COATED	
124	DIMENSION SHIFT TURRET DIST. 300 mm	
125	MEAS. LOC. SHIFT TURRET DIST. SHIFT LEVER-LOCATION	



Pos.	Information	Amendment number
126	SELECTOR LEVER	
127	RADIUS SELECTOR LEVER mm	
130	LENGTH OFFSET SELECTOR LEVER mm	
131	G.SHIFT LEVER n	
132	RADIUS 1 SHIFT LEVER mm	
135	SHIFT LEVER CONNECTION KNURLING	
142	SPRING ARRANGEMENT Q1	
143	SPRING FORCE DETENT PLUNGER RG 90 N	
146	SELECTOR SPRING FORCE, OUTSIDE 50 N	
148	HUMP SPRING FORCE, OUTSIDE 150.000 N	
152	ALLOCATION DETENT LEVER VER. A	
153	SWITCH, REVERSE GEAR y	
154	DESIGN, RG (REV.GEAR) SWITCH CLOSING	
155	DESIGN, CONNECTION, RG SWITCH DIN BAYONET	
156	CODE SWITCH RG A1	
157	PROT. CAP SWITCH, REVERSE GEAR y	
158	SWITCH, NEUTRAL GEAR y	
159	DESIGN,NG(NEUTRAL GEAR)SWITCH OPENING SWITCH	
160	DESIGN, CONNECTION, NG SWITCH DIN BAYONET	
161	CODE SWITCH NG A1	
162	PROT.CAP SWITCH, NEUTRAL GEAR y	
163	PRESSURE SWITCH n	
167	PROTECTING CAP PRESS.SWITCH	
168	RG-GATE-IDENTIFICATION SWITCH n	
173	SWITCH RG-ENGAGED n	
178	SWITCH GP y	
179	DESIGN, GP SWITCH CLOSING	
180	DESIGN, CONNECTION, GP SWITCH DIN BAYONET	
181	CODE SWITCH GP A1	
182	PROTECTING CAP GP SWITCH y	
188	SWITCH GV n	
193	SWITCH HG n	



Pos.	Information	Amendment number
198	SWITCH 1 GEAR n	
203	ATTACHM.POS.HEAT EXCHANGER IN FRONT RIGHT	
204	DES.CONN.HEAT EXCHANGER PREPARED	
205	VER. TRANSMISSION VENTILATION PLUG CONNECTION 90 DEGREE	
206	LENGTH, VENT TUBE mm	
207	POS.TRANSMISSION VENTILATION IN FRONT	
212	PULSE SENSOR TRANSMISSION PREPARED	
213	PULSE RATE PULSE SENS GEARBOX 6 IMP/U	
214	PROT.CAP PULSE SENSOR GEARBOX	
222	OIL CAPACITY, GEARBOX 15.5 dm3	
223	OIL FILL VARIANT EX WORKS	
224	OIL GRADE PERMISSIBLE ACC. TO TE-ML01	
225	OIL CLASS FIRST FILLING E	
226	CODING OUTER CONSERVATION KA1	
228	CODING INNER CONSERVATION KI1	
229	CONSERVATION SPECIFICATION ZFN 916	
230	COLOR BLACK-GREY	
231	COLOUR CLASSIFICATION ACC. TO RAL 7021	
232	PAINTING, ZF STANDARD 915 W	
281	Documents -----	
282	TURN.SHAFT CONT Drawing 1316.173.010	
283	Alias ID -----	
284	IVECO MAGIRUS AG 41289479	



Graphics	Pos.	Material number	Name	VKF	Amend. no.	Amend. start	Prod. no.	Material feature / tech. info.	ID
161.01.07-1	110	1356.101.003	GEARBOX HOUSING	1	Z0000307951 0	14.08.2009		LANG*ENTL.W.STCK*BEARB*GP*UNBEARB.1G*HG*SC GP-SAV	3
161.01.07-1	180	1325.101.810	CLUTCH HOUSING	1	Z0000307951 0	14.08.2009		SAE D=11*ABSTZG.2X D=9*UNBEARB.SENSOR/GV/M8/ SCHUTZBL/LEITG	3
161.02.01-1	10	1367.102.006	INPUT SHAFT	1	Z0000308011 0	20.01.2009		L=117*OD*16G- LANG*Z=25*KEGELR.ZL*SAE2*16S2230*BK144*D=2,5	3
161.02.01-1	240	1325.102.802	CONNPLATE	1	Z0000307951 0	14.08.2009		VERBINDG*A.PLATTE-GEH.1 *DRUCKGUSS	3
161.02.01-1	910	1325.102.016	CONNPLATE	1		00.00.0000		ABST.PKT 1 STANDARD-AUSR *L=142,8*D=62,62*Y=77,0*Z=60,6	3
161.03.02-1	20	1356.103.002	LAYSHAFT	1		00.00.0000		16S2530TO*LANG*3G ZF7 *K I MIT FREIGANG GEH.	3
161.04.05-1	30	1367.104.004	MAIN SHAFT	1	Z0000308011 0	20.01.2009		16S1930TD/2230TO*LANG*KEGELR.ZL*1+2G BK MOL*3+4G CARB*3G ZF7	3
161.05.01-1	130	1325.105.001	RETURN	1	Z0000307951 0	14.08.2009		12/16GANG*LANG	3
161.06.02-1	40	1356.106.001	GEARSHIFT SYST	1	Z0000308011 0	20.01.2009		16G LANG*ERKENNUNG 3+4G *1G- ANZ OHNE	3
161.06.02-1	44	1325.106.803	GEARSHIFT SYST	1	Z0000308011 0	20.01.2009		GLEITSTEINE*ECOSPLIT 4*12GANG*16GANG	3
068.07.25-1	460	1316.108.817	GEAR SHIFT HOUSING	1	Z0000307951 0	14.08.2009		WL-SERVO*H-H*SCHUTZK. *STOPFEN	3
068.07.25-1	910	1316.108.072	GEAR SHIFT HOUSING	1		00.00.0000		WL-SERVO*W I+H-H*ECO4	3
068.07.25-1	914	1316.108.459	GEAR SHIFT SHAFT	1	Z0000402801 4	13.05.2009		SERVO WL/WR*RASTE 200N	3
068.07.25-1	924	1316.108.019	DETENT	1	Z0000816751 0	20.05.2010		WL/WR-SERVO*W I*H- H*HF150N*R.HEBEL RE AUSF.A	3
068.07.25-1	930	1316.108.811	COVER	1	Z0000402801 4	13.05.2009		WL/WR-SERVO*W I/WII	3
062.08.30-1	954	1316.171.403	END COVER	1	Z0000402801 4	13.05.2009		WL-SERVO	3

VKF Incidence factor

ID Identification (output code)



Graphics	Pos.	Material number	Name	VKF	Amend. no.	Amend. start	Prod. no.	Material feature / tech. info.	ID
062.08.30-1	960	1316.171.436	PNEUMSERVOUNIT	1	Z0000402801 4	13.05.2009		PSE1 MIT EL.SAV6*D=1,3*WL/ WR*EUROPA*IVECO SYNCHR.PROTECTION	3
068.09.01-1	934	1316.109.022	CONNECTING PARTS	1	Z0000402801 4	13.05.2009		HASV 2-ST*D=1,55 INTEGR. *RG- RASTE 90N*WL/WR*SERVO	3
068.09.01-1	940	1316.109.455	CONNECTING PARTS	1	Z0000402801 4	13.05.2009		NG-OEFF*RG-SCHL*BAJONETT MIT KAPPE*SERVO	3
161.10.01-1	200	1356.110.002	OIL SUPPLY	1	Z0000307951 0	14.08.2009		16GANG*LANG	3
161.10.01-1	920	1325.110.005	PUMP	1		00.00.0000		ECOSPLIT 4 *PUMPENDECKEL GESCHR.	3
068.12.08-1	918	1316.149.422	SET OF SPRINGS	1	Z0000402801 4	13.05.2009		SERVO-WL*Q1*WF 50 *RAEND=23*GS KOLBEN 50,5	3
161.28.02-1	370	1367.128.803	PLANETARY RANGE	1	Z0000307951 0	14.08.2009		SOLO*8/16 S 181 SCHMAL	3
161.40.01-1	50	1356.112.001	GV-SHIFT SYSTEM	1	Z0000308011 0	20.01.2009		16GANG LANG*ECO4	3
161.40.01-1	340	1325.112.806	GV-SHIFT SYSTEM	1	Z0000307951 0	14.08.2009		ZYL.LANG*VENTIL OD*O.VERSCHL.SCHR.GV- ANZ*LA=OBEN	3
161.43.03-1	40	1325.131.012	GP HOUSING	1		00.00.0000		SOLO*ABTR.DECKEL*IMP VORBER*O.LP*O.N1- N4*SCHR.MIKROVERKAP	3
161.43.03-1	50	1325.131.400	CLOSING COMPONENTS	1		00.00.0000		NA-OEFFNUNG	3
161.44.01-1	10	1354.132.002	PLANETARY DRIVE	1		00.00.0000		GP SCHMAL *BUCHSE KK GPS O.SCHMIERBOHRG	3
161.44.01-1	60	1325.132.405	OUTPUT FLANGE	1		00.00.0000		AD=180*LZ=4*D=15,0*SOLO*L= 94*BESCHICHTET VPT	3
161.45.01-1	20	1325.133.004	SYNCHRONIZER	1		00.00.0000		GP L+S-GRUPPE*Z=6*SOLO *BUCHSE GETRENNT*DRUCKGUSSLOS 4	3
161.46.01-1	30	1325.134.006	GP SHIFT SYSTEM	1		00.00.0000		LANG*SOLO*GP-ANZ.GEH.2	3

VKF Incidence factor

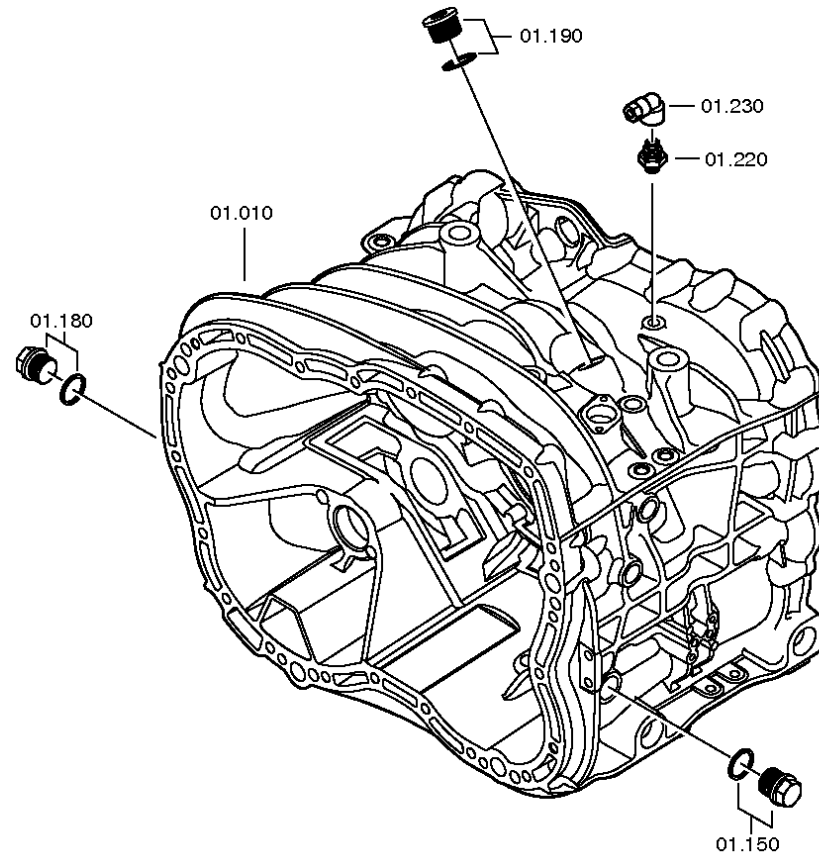
ID Identification (output code)

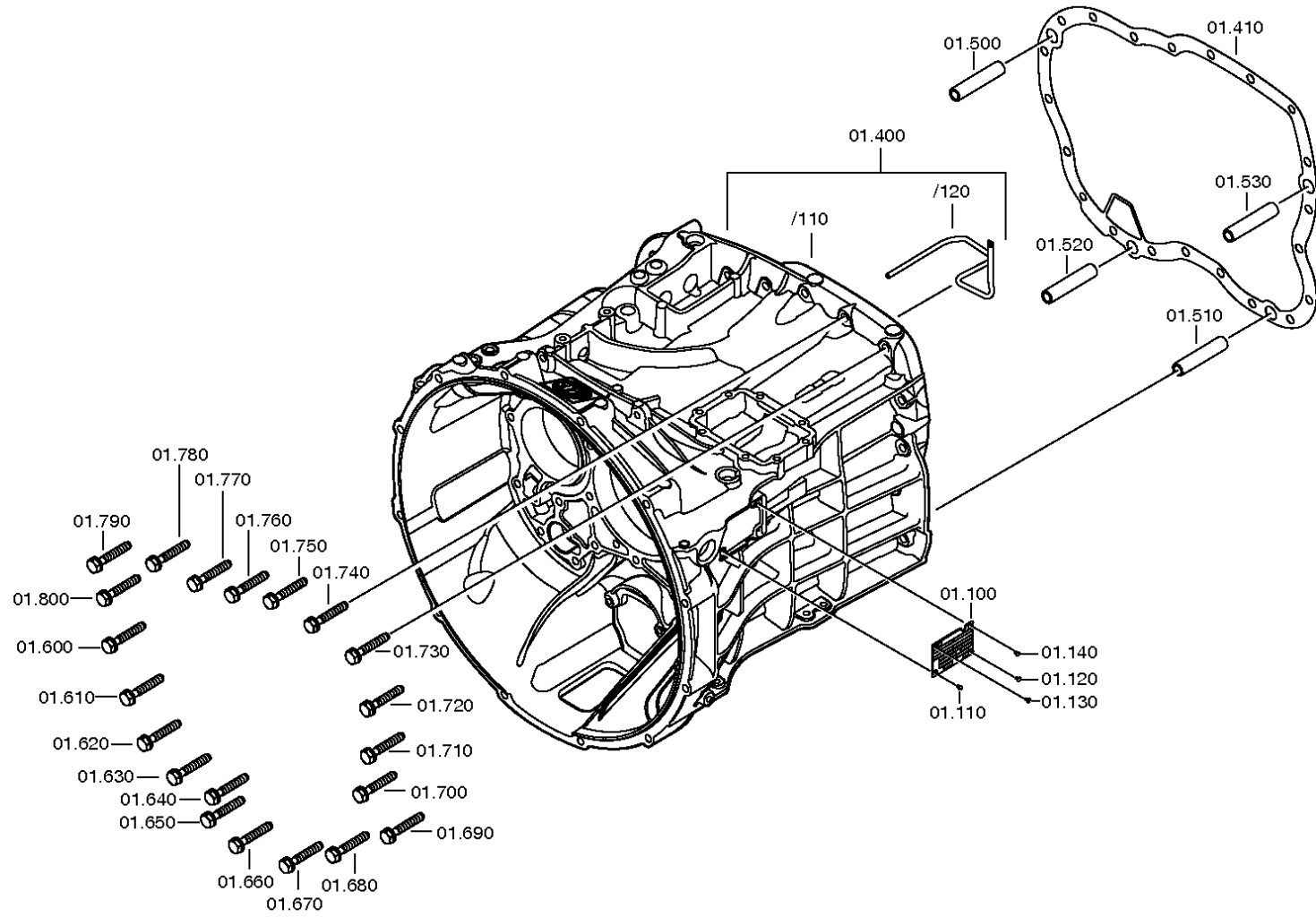


Graphics	Pos.	Material number	Name	VKF	Amend. no.	Amend. start	Prod. no.	Material feature / tech. info.	ID
161.46.01-1	400	1325.134.404	SWITCH	Z0000307951 1	0	14.08.2009		GP*SCHLIESSER*BAJONETT *RIEGELANSCHLAG 145N.M	3
161.57.04-1	510	1325.145.004	RANGE SELECTION	Z0000307951 1	0	14.08.2009		LANG*HAUPTABSCHALTVENTIL	3
161.70.06-1	480	1356.170.009	SHUT-OFF VALVE	Z0000307951 1	0	14.08.2009		16G*H-H*LANG*ROHRLEIT HASV- SAV6*ROHR GV-VENTIL-SAV6*GV- D=1,3	3
161.90.08	320	1325.147.001	HEAT EXCHANGER	Z0000307951 1	0	14.08.2009		VERSCHL	3
161.93.25-1	260	1325.168.005	CLUTCH RELEASE DEVICE	Z0000307951 1	0	14.08.2009		ROLLE*OHNE AUSRUECKER	3

VKF Incidence factor

ID Identification (output code)







Pos.	Material number	Name	VKF	Amend. no.	Amend. start	Prod. no.	Material feature / tech. info.	OTK	External material no.	ID	Weight	SP
10	1325.201.031	GEARBOX HOUSING	1	Z0000847 0912	28.06.2010	28.06.2010	KPL.BEARBEITET*GP-ANZ			3	0,000	
100	---	TYPE PLATE	1		00.00.0000		KONZERN			3	0,000	
---	0730.365.241	TYPE PLATE	1		00.00.0000		EINHEITSSCH. VERDREHSICHER			5	0,000	
---	0730.365.259	TYPE PLATE	1		00.00.0000		EINHEITSSCH. VERDREHSICHER			5	0,000	
---	0730.365.267	TYPE PLATE	1		00.00.0000		CHINA			5	0,000	
---	0730.300.258	TYPE PLATE	1		00.00.0000		EINHEITSSCH. VERDREHSICHER			5	0,000	
---	0730.365.271	TYPE PLATE	1		00.00.0000		RUSSLAND/ KYRILLISCH			5	0,000	
---	0730.365.257	TYPE PLATE	1		00.00.0000		S.S.CH IRAN			5	0,000	
110	0731.300.027	BLIND RIVET	1	Z0000790 4810	01.01.2012	01.01.2012				5	0,000	
120	0731.300.027	BLIND RIVET	1	Z0000790 4810	01.01.2012	01.01.2012				5	0,000	
130	0731.300.027	BLIND RIVET	1	Z0000790 4810	01.01.2012	01.01.2012				5	0,000	
140	0731.300.027	BLIND RIVET	1	Z0000790 4810	01.01.2012	01.01.2012				5	0,000	
150	---	SCREW PLUG	1	Z0001011 2111	01.01.2012	01.01.2012	60N.M*DICHTRING M24X1,5			3	0,000	
---	0636.304.088	SCREW PLUG	1	Z0001011 2110	24.11.2010	24.11.2010	M24X1,5			5	0,000	
---	0730.008.637	SEALING RING	1	Z0001011 2110	24.11.2010	24.11.2010	A24X29			5	0,000	
180	---	SCREW PLUG	1	Z0001011 2111	01.01.2012	01.01.2012	60N.M*DICHTRING M24X1,5			3	0,000	
---	0636.304.088	SCREW PLUG	1	Z0001011 2110	24.11.2010	24.11.2010	M24X1,5			5	0,000	
---	0730.008.637	SEALING RING	1	Z0001011 2110	24.11.2010	24.11.2010	A24X29			5	0,000	

VKF Incidence factor

OTK Optional technical kit

ID Identification (output code)

SP Supplier plant



Pos.	Material number	Name	VKF	Amend. no.	Amend. start	Prod. no.	Material feature / tech. info.	OTK	External material no.	ID	Weight	SP
190	---	SCREW PLUG	1	Z0001016 4412	01.01.2012	01.01.2012	70N.M*DICHTRING M26X1,5			3	0,000	
---	0636.100.811	SCREW PLUG	1	Z0001016 4420	25.11.2010	25.11.2010	M26X1,5			5	0,000	
---	0634.801.249	SEALING RING	1	Z0001016 4420	25.11.2010	25.11.2010	26X31			5	0,010	
220	0501.315.794	CANNON SOCKET	1	Z0000636 6310	29.01.2010	29.01.2010	VOSS M10X1			5	0,000	
400	1325.201.025	CLUTCH HOUSING	1		00.00.0000		SAE D=11*ABSTZG.2X D=9* UNBEARB.SENSOR/GV/M8/ SCHUTZBL/LEITG			3	0,000	
410	0501.322.776	GASKET	1		00.00.0000					5	0,000	
500	0731.201.563	CYLINDRICAL PIN	1		00.00.0000					5	0,000	
510	0731.201.563	CYLINDRICAL PIN	1		00.00.0000					5	0,000	
520	0731.201.563	CYLINDRICAL PIN	1		00.00.0000					5	0,000	
530	0731.201.563	CYLINDRICAL PIN	1		00.00.0000					5	0,000	
600	0636.016.405	HEXAGON BOLT	1	Z0000706 0111	01.01.2012	01.01.2012	M10X60			5	0,000	
610	0636.016.405	HEXAGON BOLT	1	Z0000706 0111	01.01.2012	01.01.2012	M10X60			5	0,000	
620	0636.016.405	HEXAGON BOLT	1	Z0000706 0111	01.01.2012	01.01.2012	M10X60			5	0,000	
630	0636.016.405	HEXAGON BOLT	1	Z0000706 0111	01.01.2012	01.01.2012	M10X60			5	0,000	
640	0636.016.405	HEXAGON BOLT	1	Z0000706 0111	01.01.2012	01.01.2012	M10X60			5	0,000	
650	0636.016.405	HEXAGON BOLT	1	Z0000706 0111	01.01.2012	01.01.2012	M10X60			5	0,000	
660	0636.016.405	HEXAGON BOLT	1	Z0000706 0111	01.01.2012	01.01.2012	M10X60			5	0,000	
670	0636.016.405	HEXAGON BOLT	1	Z0000706 0111	01.01.2012	01.01.2012	M10X60			5	0,000	

VKF Incidence factor

OTK Optional technical kit

ID Identification (output code)

SP Supplier plant



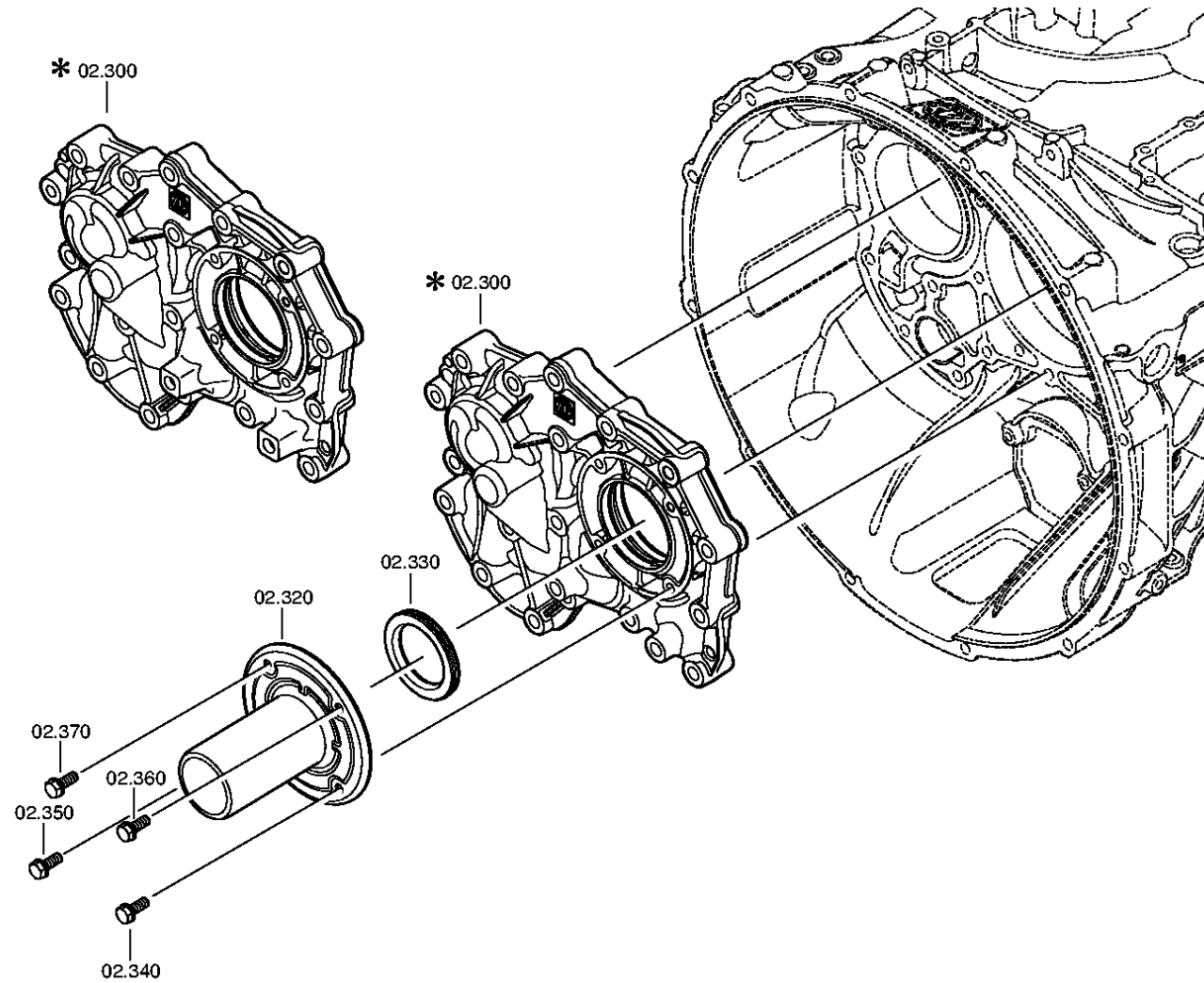
Pos.	Material number	Name	VKF	Amend. no.	Amend. start	Prod. no.	Material feature / tech. info.	OTK	External material no.	ID	Weight	SP
680	0636.016.405	HEXAGON BOLT	1	Z0000706 0111	01.01.2012	01.01.2012	M10X60			5	0,000	
690	0636.016.405	HEXAGON BOLT	1	Z0000706 0111	01.01.2012	01.01.2012	M10X60			5	0,000	
700	0636.016.405	HEXAGON BOLT	1	Z0000706 0111	01.01.2012	01.01.2012	M10X60			5	0,000	
710	0636.016.405	HEXAGON BOLT	1	Z0000706 0111	01.01.2012	01.01.2012	M10X60			5	0,000	
720	0636.016.405	HEXAGON BOLT	1	Z0000706 0111	01.01.2012	01.01.2012	M10X60			5	0,000	
730	0636.016.405	HEXAGON BOLT	1	Z0000706 0111	01.01.2012	01.01.2012	M10X60			5	0,000	
740	0636.016.405	HEXAGON BOLT	1	Z0000706 0111	01.01.2012	01.01.2012	M10X60			5	0,000	
750	0636.016.405	HEXAGON BOLT	1	Z0000706 0111	01.01.2012	01.01.2012	M10X60			5	0,000	
760	0636.016.405	HEXAGON BOLT	1	Z0000706 0111	01.01.2012	01.01.2012	M10X60			5	0,000	
770	0636.016.405	HEXAGON BOLT	1	Z0000706 0111	01.01.2012	01.01.2012	M10X60			5	0,000	
780	0636.016.405	HEXAGON BOLT	1	Z0000706 0111	01.01.2012	01.01.2012	M10X60			5	0,000	
790	0636.016.405	HEXAGON BOLT	1	Z0000706 0111	01.01.2012	01.01.2012	M10X60			5	0,000	
800	0636.016.405	HEXAGON BOLT	1	Z0000706 0111	01.01.2012	01.01.2012	M10X60			5	0,000	

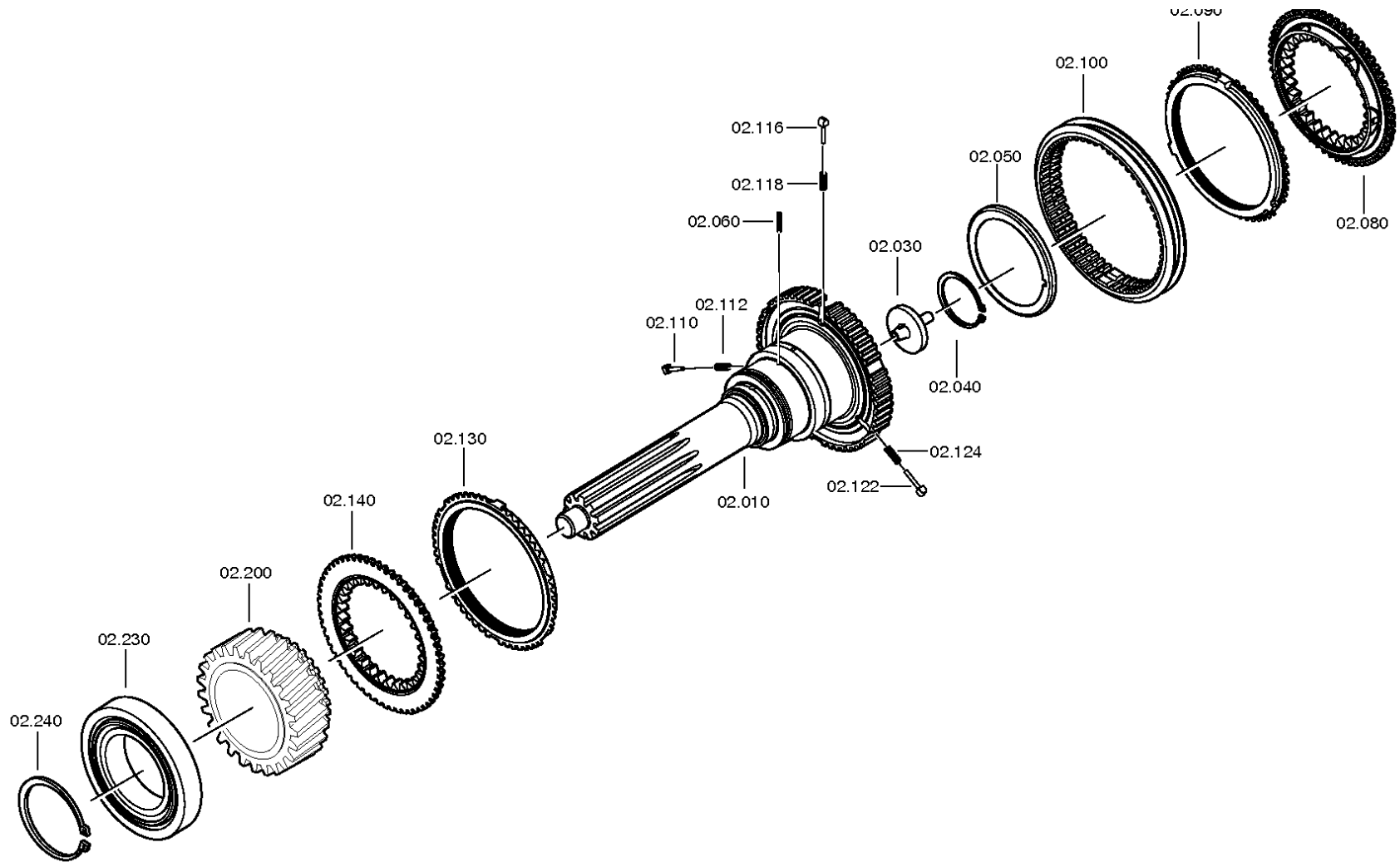
VKF Incidence factor

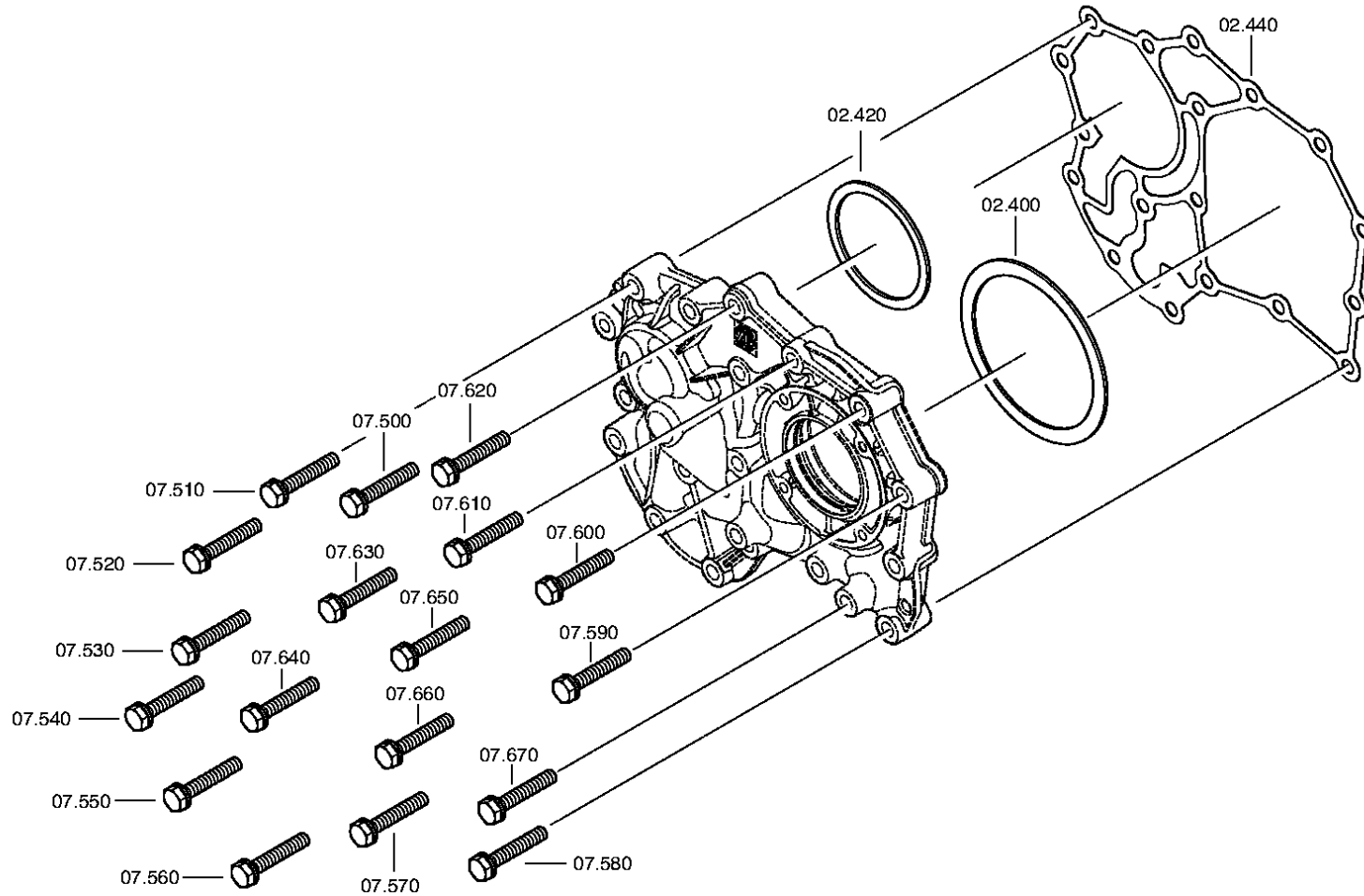
OTK Optional technical kit

ID Identification (output code)

SP Supplier plant









Pos.	Material number	Name	VKF	Amend. no.	Amend. start	Prod. no.	Material feature / tech. info.	OTK	External material no.	ID	Weight	SP
10	1316.302.221	INPUT SHAFT	1	Z0000308 0110	20.01.2009	20.01.2009				5	0,000	
30	1354.302.019	PIPE	1	Z0000308 0110	20.01.2009	20.01.2009				5	0,000	
40	0630.502.027	RETAINING RING	1	Z0000308 0110	20.01.2009	20.01.2009	50X2			5	8	
50	0750.101.179	OIL DAM	1	Z0000718 7910	20.05.2010	20.05.2010	88,0X95,5X6,0			3	0,000	
60	0631.328.659	SLOTPIN	1	Z0000308 0110	20.01.2009	20.01.2009	4X30			5	0,000	
80	1316.304.201	CLUTCH BODY	1	Z0000308 0110	20.01.2009	20.01.2009	ZF-BK 144			5	0,000	
90	1316.304.189	SYNCHRORING	1	Z0000308 0110	20.01.2009	20.01.2009	ZF-BK 144		1832004	5	0,000	
100	1316.304.188	SLIDING SLEEVE	1	Z0000308 0110	20.01.2009	20.01.2009	ZF-BK 144			5	0,000	
110	1297.304.436	PRESSURE PIECE	1	Z0000308 0110	20.01.2009	20.01.2009				5	0,004	
112	0732.040.409	COMPRSPRING	1	Z0000308 0110	20.01.2009	20.01.2009				5	0,002	
116	1297.304.436	PRESSURE PIECE	1	Z0000308 0110	20.01.2009	20.01.2009				5	0,004	
118	0732.040.409	COMPRSPRING	1	Z0000308 0110	20.01.2009	20.01.2009				5	0,002	
122	1297.304.436	PRESSURE PIECE	1	Z0000308 0110	20.01.2009	20.01.2009				5	0,004	
124	0732.040.409	COMPRSPRING	1	Z0000308 0110	20.01.2009	20.01.2009				5	0,002	
130	1316.304.189	SYNCHRORING	1	Z0000308 0110	20.01.2009	20.01.2009	ZF-BK 144		1832004	5	0,000	
140	1316.304.201	CLUTCH BODY	1	Z0000308 0110	20.01.2009	20.01.2009	ZF-BK 144			5	0,000	

VKF Incidence factor

OTK Optional technical kit

ID Identification (output code)

SP Supplier plant



Pos.	Material number	Name	VKF	Amend. no.	Amend. start	Prod. no.	Material feature / tech. info.	OTK	External material no.	ID	Weight	SP
200	1316.302.067	HELICAL GEAR	1	Z0000200 2910	09.06.2009	09.06.2009	Z35 IN 1316 302 026(1)			5	0,000	
230	0750.117.732	TAROLLBEARING	1	Z0000308 0110	20.01.2009	20.01.2009	85,0X150,0X30,5		820-400-2350	3	0,000	
240	0730.501.598	RETAINING RING	1	Z0000308 0110	20.01.2009	20.01.2009	85X4			5	0,000	
300	1325.302.052	CONNPLATE	1		00.00.0000					5	0,000	
320	1325.302.029	GUIDE TUBE	1		00.00.0000					5	0,000	
330	---	SHAFT SEAL	1		00.00.0000		55X78X8			3	0,000	
---	0734.310.435	SHAFT SEAL	1		00.00.0000		55X78X8 FA.CFW		1831926	5	0,000	
340	---	COMBISCREW	1		00.00.0000		M8X22			5	0,000	
---	0636.115.214	COMBISCREW	1		00.00.0000		M8X22			5	0,000	
350	---	COMBISCREW	1		00.00.0000		M8X22			5	0,000	
---	0636.115.214	COMBISCREW	1		00.00.0000		M8X22			5	0,000	
360	---	COMBISCREW	1		00.00.0000		M8X22			5	0,000	
---	0636.115.214	COMBISCREW	1		00.00.0000		M8X22			5	0,000	
370	---	COMBISCREW	1		00.00.0000		M8X22			5	0,000	
---	0636.115.214	COMBISCREW	1		00.00.0000		M8X22			5	0,000	
400	---	SHIM	1		00.00.0000		S= 0,90- 2,20(ABSTUFUNG:0,05MM)			3	0,000	
---	2050.309.094	SHIM	1		00.00.0000		A=2,2 IN 2050 309 090 C45E WW.F500 ZFN410			5	0,000	
---	0730.007.489	SHIM	1		00.00.0000		A=2,15 IN 2050 309 090(2)			5	0,000	
---	0730.007.488	SHIM	1		00.00.0000		A=2,10 IN 2050 309 090(2)			5	0,000	
---	0730.007.487	SHIM	1		00.00.0000		A=2,05 IN 2050 309 090(2)			5	0,000	
---	0730.007.486	SHIM	1		00.00.0000		A=2,00 IN 2050 309 090(2)			5	0,000	
---	0730.007.485	SHIM	1		00.00.0000		A=1,95 IN 2050 309 090(2)			5	0,000	
---	0730.007.484	SHIM	1		00.00.0000		A=1,90 IN 2050 309 090(2)			5	0,000	
---	0730.007.483	SHIM	1		00.00.0000		A=1,85 IN 2050 309 090(2)			5	0,000	
---	0730.007.482	SHIM	1		00.00.0000		A=1,80 IN 2050 309 090(2)			5	0,000	
---	0730.007.481	SHIM	1		00.00.0000		A=1,75 IN 2050 309 090(2)			5	0,000	

VKF Incidence factor

OTK Optional technical kit

ID Identification (output code)

SP Supplier plant



Pos.	Material number	Name	VKF	Amend. no.	Amend. start	Prod. no.	Material feature / tech. info.	OTK	External material no.	ID	Weight	SP
---	0730.007.480	SHIM	1		00.00.0000		A=1,70 IN 2050 309 090(2)		1833896	5	0,000	
---	0730.007.479	SHIM	1		00.00.0000		A=1,65 IN 2050 309 090(2)			5	0,000	
---	0730.007.136	SHIM	1		00.00.0000		A=1,60 IN 2050 309 090(2)			5	0,000	
---	0730.007.135	SHIM	1		00.00.0000		A=1,55 IN 2050 309 090(2)			5	0,000	
---	0730.007.134	SHIM	1		00.00.0000		A=1,50 IN 2050 309 090(2)			5	0,000	
---	0730.007.133	SHIM	1		00.00.0000		A=1,45 IN 2050 309 090(2)			5	0,000	
---	0730.007.132	SHIM	1		00.00.0000		A=1,40 IN 2050 309 090(2)			5	0,000	
---	0730.007.131	SHIM	1		00.00.0000		A=1,35 IN 2050 309 090(2)			5	0,000	
---	0730.007.130	SHIM	1		00.00.0000		A=1,30 IN 2050 309 090(2)			5	0,000	
---	0730.007.129	SHIM	1		00.00.0000		A=1,25 IN 2050 309 090(2)			5	0,000	
---	2050.309.034	SHIM	1		00.00.0000		A=1,2 IN 2050 309 090 C45E WW.F500 ZFN410			5	0,000	
---	0730.007.128	SHIM	1		00.00.0000		A=1,15 IN 2050 309 090(2)			5	0,000	
---	0730.007.127	SHIM	1		00.00.0000		A=1,10 IN 2050 309 090(2)			5	0,000	
---	0730.007.126	SHIM	1		00.00.0000		A=1,05 IN 2050 309 090(2)			5	0,000	
---	2050.309.065	SHIM	1		00.00.0000		A=1,0 IN 2050 309 090 C45E WW.F500 ZFN410			5	0,000	
---	0730.005.749	SHIM	1		00.00.0000		A=0,95 IN 2050 309 090(2)			5	0,000	
---	0730.005.748	SHIM	1		00.00.0000		A=0,90 IN 2050 309 090(2)			5	0,000	
420	---	SHIM	1		00.00.0000		S= 1,85- 3,25(ABSTUFUNG:0, 05MM)			3	0,000	
---	0730.112.938	SHIM	1	C0100737 5C10	00.00.0000	00.00.0000	A=3,25			5	0,000	
---	0730.112.937	SHIM	1	C0100737 5C10	00.00.0000	00.00.0000	A=3,20			5	0,000	
---	0730.112.936	SHIM	1	C0100737 5C10	00.00.0000	00.00.0000	A=3,15			5	0,000	
---	0730.112.935	SHIM	1	C0100737 5C10	00.00.0000	00.00.0000	A=3,10			5	0,000	
---	0730.106.860	SHIM	1	C0100737 5C10	00.00.0000	00.00.0000	A=3,05 IN 0730 106 904(2)			5	0,000	

VKF Incidence factor

OTK Optional technical kit

ID Identification (output code)

SP Supplier plant



Pos.	Material number	Name	VKF	Amend. no.	Amend. start	Prod. no.	Material feature / tech. info.	OTK	External material no.	ID	Weight	SP
---	0730.106.917	SHIM	1		00.00.0000		A=3,00 IN 0730 106 904(2)			5	0,000	
---	0730.106.916	SHIM	1		00.00.0000		A=2,95 IN 0730 106 904(2)		1833921	5	0,000	
---	0730.106.915	SHIM	1		00.00.0000		A=2,90 IN 0730 106 904(2)		1833920	5	0,000	
---	0730.106.914	SHIM	1		00.00.0000		A=2,85 IN 0730 106 904(2)		1833919	5	0,000	
---	0730.106.913	SHIM	1		00.00.0000		A=2,80 IN 0730 106 904(2)		1833918	5	0,000	
---	0730.106.912	SHIM	1		00.00.0000		A=2,75 IN 0730 106 904(2)			5	0,000	
---	0730.106.911	SHIM	1		00.00.0000		A=2,70 IN 0730 106 904(2)		1833917	5	0,000	
---	0730.106.910	SHIM	1		00.00.0000		A=2,65 IN 0730 106 904(2)		1833916	5	0,000	
---	0730.106.909	SHIM	1		00.00.0000		A=2,60 IN 0730 106 904(2)		1833915	5	0,000	
---	0730.106.908	SHIM	1		00.00.0000		A=2,55 IN 0730 106 904(2)		1833914	5	0,000	
---	0730.100.799	SHIM	1		00.00.0000		A=2,50 IN 0730 106 904(2)			5	0,000	
---	0730.100.800	SHIM	1		00.00.0000		A=2,45 IN 0730 106 904(2)		1833898	5	0,000	
---	0730.100.801	SHIM	1		00.00.0000		A=2,40 IN 0730 106 904(2)			5	0,000	
---	0730.100.802	SHIM	1		00.00.0000		A=2,35 IN 0730 106 904(2)		1833900	5	0,000	
---	0730.100.803	SHIM	1		00.00.0000		A=2,30 IN 0730 106 904(2)		1833905	5	0,000	
---	0730.101.466	SHIM	1		00.00.0000		A=2,25 IN 0730 106 904(2)			5	0,000	
---	0730.101.467	SHIM	1		00.00.0000		A=2,20 IN 0730 106 904(2)		1833906	5	0,000	
---	0730.101.468	SHIM	1		00.00.0000		A=2,15 IN 0730 106 904(2)		1833907	5	0,000	
---	0730.101.469	SHIM	1		00.00.0000		A=2,10 IN 0730 106 904(2)		1833909	5	0,000	
---	0730.101.470	SHIM	1		00.00.0000		A=2,05 IN 0730 106 904(2)		1833910	5	0,000	
---	0730.101.471	SHIM	1		00.00.0000		A=2,00 IN 0730 106 904(2)			5	0,000	
---	0730.106.907	SHIM	1		00.00.0000		A=1,95 IN 0730 106 904(2)		1833912	5	0,000	
---	0730.106.906	SHIM	1		00.00.0000		A=1,90 IN 0730 106 904(2)		1833911	5	0,000	
---	0730.106.905	SHIM	1		00.00.0000		A=1,85 IN 0730 106 904(2)			5	0,000	
440	0501.324.454	GASKET	1	C0100556 8F10	00.00.0000	00.00.0000				5	0,000	
500	0636.102.270	HEXAGON BOLT	1	Z0000917 7410	01.01.2012	01.01.2012	M10X60			5	0,000	
510	0636.102.270	HEXAGON BOLT	1	Z0000917 7410	01.01.2012	01.01.2012	M10X60			5	0,000	

VKF Incidence factor

OTK Optional technical kit

ID Identification (output code)

SP Supplier plant



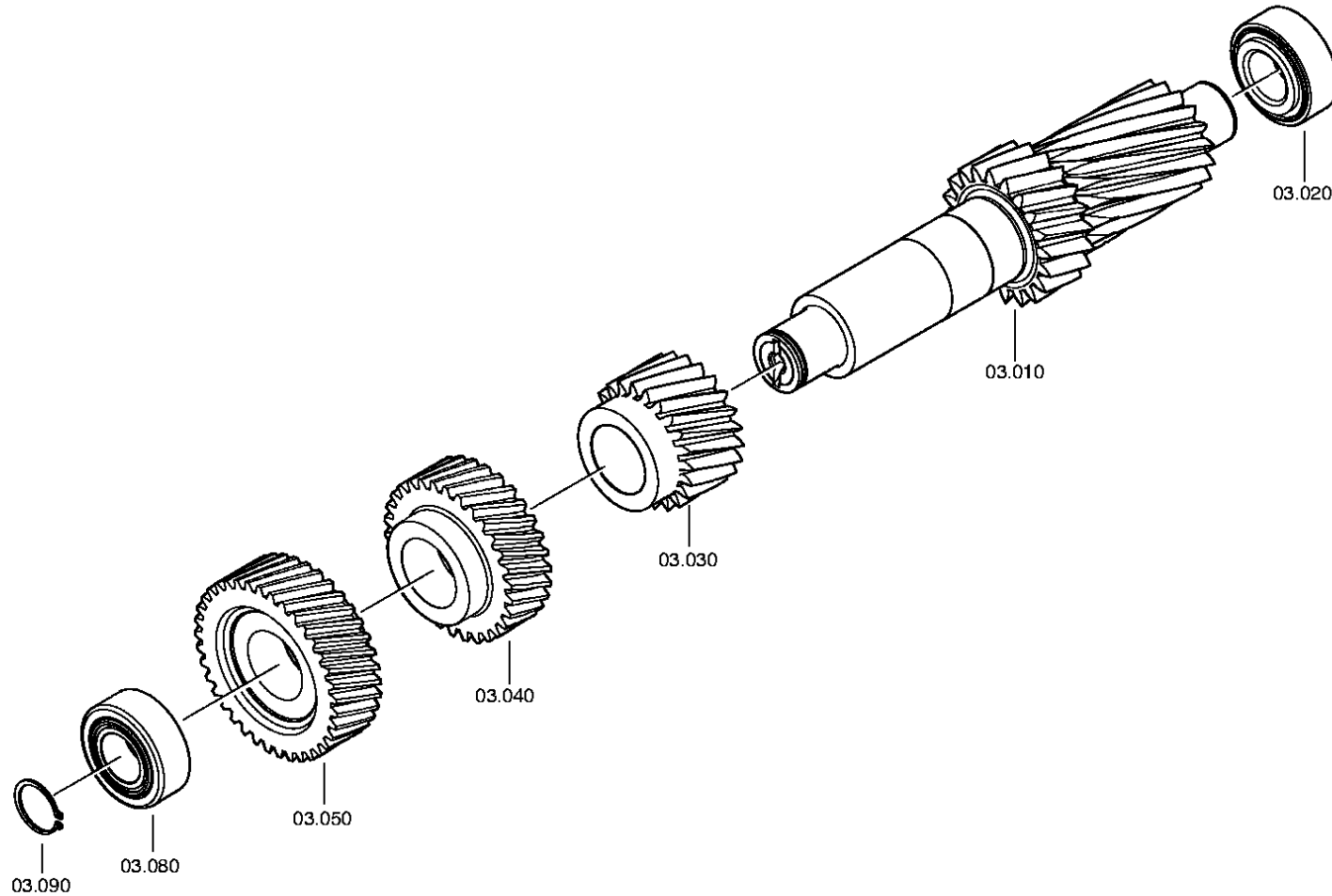
Pos.	Material number	Name	VKF	Amend. no.	Amend. start	Prod. no.	Material feature / tech. info.	OTK	External material no.	ID	Weight	SP
520	0636.102.270	HEXAGON BOLT	1	Z0000917 7410	01.01.2012	01.01.2012	M10X60			5	0,000	
530	0636.102.270	HEXAGON BOLT	1	Z0000917 7410	01.01.2012	01.01.2012	M10X60			5	0,000	
540	0636.102.270	HEXAGON BOLT	1	Z0000917 7410	01.01.2012	01.01.2012	M10X60			5	0,000	
550	0636.102.270	HEXAGON BOLT	1	Z0000917 7410	01.01.2012	01.01.2012	M10X60			5	0,000	
560	0636.102.270	HEXAGON BOLT	1	Z0000917 7410	01.01.2012	01.01.2012	M10X60			5	0,000	
570	0636.102.270	HEXAGON BOLT	1	Z0000917 7410	01.01.2012	01.01.2012	M10X60			5	0,000	
580	0636.102.270	HEXAGON BOLT	1	Z0000917 7410	01.01.2012	01.01.2012	M10X60			5	0,000	
590	0636.102.270	HEXAGON BOLT	1	Z0000917 7410	01.01.2012	01.01.2012	M10X60			5	0,000	
600	0636.102.270	HEXAGON BOLT	1	Z0000917 7410	01.01.2012	01.01.2012	M10X60			5	0,000	
610	0636.102.270	HEXAGON BOLT	1	Z0000917 7410	01.01.2012	01.01.2012	M10X60			5	0,000	
620	0636.102.270	HEXAGON BOLT	1	Z0000917 7410	01.01.2012	01.01.2012	M10X60			5	0,000	
630	0636.102.270	HEXAGON BOLT	1	Z0000917 7410	01.01.2012	01.01.2012	M10X60			5	0,000	
640	0636.102.270	HEXAGON BOLT	1	Z0000917 7410	01.01.2012	01.01.2012	M10X60			5	0,000	
650	0636.102.270	HEXAGON BOLT	1	Z0000917 7410	01.01.2012	01.01.2012	M10X60			5	0,000	
660	0636.102.270	HEXAGON BOLT	1	Z0000917 7410	01.01.2012	01.01.2012	M10X60			5	0,000	
670	0636.102.270	HEXAGON BOLT	1	Z0000917 7410	01.01.2012	01.01.2012	M10X60			5	0,000	

VKF Incidence factor

OTK Optional technical kit

ID Identification (output code)

SP Supplier plant





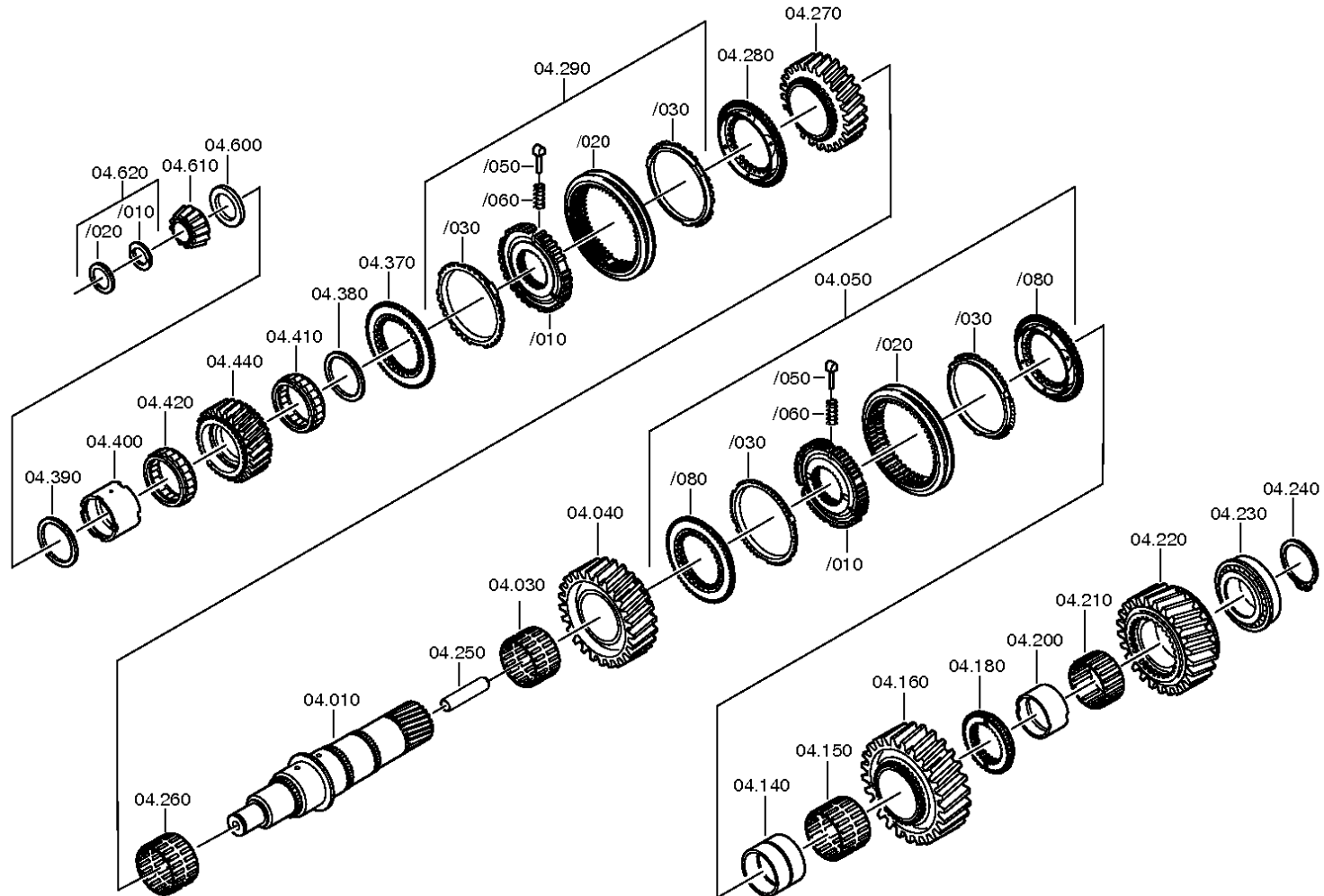
Pos.	Material number	Name	VKF	Amend. no.	Amend. start	Prod. no.	Material feature / tech. info.	OTK	External material no.	ID	Weight	SP
10	1316.303.033	LAYSHAFT	1		00.00.0000		ENTHALT.IN 1316 303 032(0)			5	0,000	
20	0750.117.009	TAROLLBEARING	1		00.00.0000		49,2X103,1X43,6		820-400-2480	3	0,000	
30	1316.303.005	HELICAL GEAR	1		00.00.0000		3G/Z26 IN 1312 303 018(1)			5	0,000	
40	1316.303.065	HELICAL GEAR	1		00.00.0000		Z35 IN 1312 303 013(1)			5	0,000	
50	1316.303.071	HELICAL GEAR	1		00.00.0000		KON 1			5	0,000	
80	0750.117.009	TAROLLBEARING	1		00.00.0000		49,2X103,1X43,6		820-400-2480	3	0,000	
90	---	RETAINING RING	1		00.00.0000		S= 2,40- 3,00(ABSTUFUNG:0,05MM)			3	0,000	
---	0630.531.065	RETAINING RING	1		00.00.0000		50X3		VOE12743111	5	16	
---	0630.501.111	RETAINING RING	1		00.00.0000		50X2,95			5	0,000	
---	0630.501.112	RETAINING RING	1		00.00.0000		50X2,9		0002640551	5	0,000	
---	0630.501.113	RETAINING RING	1		00.00.0000		50X2,85			5	0,000	
---	0630.501.114	RETAINING RING	1		00.00.0000		50X2,8		5004853	5	0,000	
---	0630.501.115	RETAINING RING	1		00.00.0000		50X2,75			5	0,000	
---	0630.501.116	RETAINING RING	1		00.00.0000		50X2,7		5004854	5	0,000	
---	0630.501.117	RETAINING RING	1		00.00.0000		50X2,65			5	0,000	
---	0630.501.118	RETAINING RING	1		00.00.0000		50X2,6		0002641251	5	0,000	
---	0630.501.160	RETAINING RING	1		00.00.0000		50X2,55			5	0,000	
---	0630.531.064	RETAINING RING	1		00.00.0000		50X2,5		1663657	5	0,100	
---	0630.501.159	RETAINING RING	1		00.00.0000		50X2,45			5	0,000	
---	0630.501.148	RETAINING RING	1		00.00.0000		50X2,4		0002641051	5	0,000	

VKF Incidence factor

OTK Optional technical kit

ID Identification (output code)

SP Supplier plant





Pos.	Material number	Name	VKF	Amend. no.	Amend. start	Prod. no.	Material feature / tech. info.	OTK	External material no.	ID	Weight	SP
10	1316.304.132	MAIN SHAFT	1		00.00.0000					5	0,000	
30	0750.115.303	NEEDLE CAGE	1		00.00.0000		92,0X100,0X63,0		820-400-2490	3	0,000	
40	1316.304.002	HELICAL GEAR	1		00.00.0000		2G/Z38 IN 1316 304 005(1)		133-242-3900	5	0,000	
50	1356.204.007	SYNCHRONIZER	1	Z0000698 1310	31.12.2011	31.12.2011	KPL.1+2G*BK160 MOLYBDAEN*ECOSPLIT 3+4			3	0,000	
/10	1356.304.022	SYNCHROBODY	1	Z0000698 1313	19.05.2010	19.05.2010				5	0,000	
/20	1356.304.024	SLIDING SLEEVE	1	Z0000698 1313	19.05.2010	19.05.2010	ZF-BK 160			5	0,000	
/30	1316.304.170	SYNCHRO RING	2	Z0000698 1313	19.05.2010	19.05.2010				5	0,000	
/50	1297.304.436	PRESSURE PIECE	3	Z0000698 1313	19.05.2010	19.05.2010				5	0,004	
/60	0732.040.409	COMPRSPRING	3	Z0000698 1313	19.05.2010	19.05.2010				5	0,002	
/80	1316.304.156	CLUTCH BODY	2	Z0000698 1313	19.05.2010	19.05.2010	ZF-BK160			5	0,000	
140	1312.304.084	BUSH	1		00.00.0000		ENTHALT.IN 1312 304 007(2)		820-400-2530	5	0,000	
150	0750.115.327	NEEDLE CAGE	1		00.00.0000		96,0X104,0X72,0		820-400-2540	3	0,000	
160	1316.304.010	HELICAL GEAR	1		00.00.0000		1G/Z47 IN 1312 304 033(0)		133-242-3910	5	0,000	
180	1312.304.124	CLUTCH BODY	1		00.00.0000		ENTHALT.IN 1312 304 055(0)			5	0,000	
200	1316.304.133	BUSH	1		00.00.0000		A=50,00 IN 1312 304 010(2)		820-400-2550	5	0,000	
210	0750.115.326	NEEDLE CAGE	1		00.00.0000		90,0X98,0X50,0		820-400-2560	3	0,000	
220	1316.304.012	HELICAL GEAR	1		00.00.0000		RG*Z44 IN 1312 304 125(0)		133-242-3920	5	0,000	
230	0750.117.678	TAROLLBEARING	1		00.00.0000		80,0X140,0X36,5		820-400-2570	3	0,000	
240	---	RETAINING RING	1		00.00.0000		S= 2,20- 3,65(ABSTUFUNG:0,06MM)			3	0,000	
---	0630.501.316	RETAINING RING	1		00.00.0000		80X3,5		820-400-2580	5	0,000	
---	0630.501.336	RETAINING RING	1		00.00.0000		80X3,45		820-400-2581	5	0,000	
---	0630.501.315	RETAINING RING	1		00.00.0000		80X3,4		820-400-2582	5	0,000	
---	0630.501.335	RETAINING RING	1		00.00.0000		80X3,35		820-400-2583	5	0,000	

VKF Incidence factor

OTK Optional technical kit

ID Identification (output code)

SP Supplier plant



Pos.	Material number	Name	VKF	Amend. no.	Amend. start	Prod. no.	Material feature / tech. info.	OTK	External material no.	ID	Weight	SP
---	0630.501.314	RETAINING RING	1		00.00.0000		80X3,3		820-400-2584	5	0,000	
---	0630.501.334	RETAINING RING	1		00.00.0000		80X3,25		820-400-2585	5	0,000	
---	0630.501.313	RETAINING RING	1		00.00.0000		80X3,2		820-400-2586	5	0,000	
---	0630.501.333	RETAINING RING	1		00.00.0000		80X3,15		820-400-2587	5	0,000	
---	0630.501.312	RETAINING RING	1		00.00.0000		80X3,1		820-400-2588	5	0,000	
---	0630.501.337	RETAINING RING	1		00.00.0000		80X3,55		820-400-2589	5	0,000	
---	0630.501.338	RETAINING RING	1		00.00.0000		80X3,6		820-400-2590	5	0,000	
---	0630.501.339	RETAINING RING	1		00.00.0000		80X3,65		820-400-2591	5	0,000	
250	1312.304.150	PIPE	1		00.00.0000				820-400-2610	5	0,000	
260	0750.115.303	NEEDLE CAGE	1		00.00.0000		92,0X100,0X63,0		820-400-2490	3	0,000	
270	1316.304.008	HELICAL GEAR	1		00.00.0000		3G/Z34 IN 1312 304 135(1)		133-242-3930	5	0,000	
280	1356.304.025	CLUTCH BODY	1	Z0000515 2413	02.10.2009	02.10.2009				5	0,000	
290	1356.204.005	SYNCHRONIZER	1	Z0000515 2413	02.10.2009	02.10.2009	3+4G*BK144 CARBON*MIT DRUCKSTCK.HALTENASEN			3	0,000	
/10	1356.304.019	SYNCHROBODY	1	Z0000515 2410	21.08.2009	21.08.2009				5	0,000	
/20	1356.304.023	SLIDING SLEEVE	1	Z0000515 2410	21.08.2009	21.08.2009	ZF-BK 144			5	0,000	
/30	1316.304.196	SYNCHRO RING	2	Z0000515 2410	21.08.2009	21.08.2009	ZF-BK 144 C			5	0,000	
/50	1297.304.436	PRESSURE PIECE	3	Z0000515 2410	21.08.2009	21.08.2009				5	0,004	
/60	0732.040.409	COMPRSPRING	3	Z0000515 2410	21.08.2009	21.08.2009				5	0,002	
370	1356.304.025	CLUTCH BODY	1	Z0000515 2413	02.10.2009	02.10.2009				5	0,000	
380	0750.101.158	THRUST WASHER	1		00.00.0000					3	0,000	
390	0750.101.158	THRUST WASHER	1		00.00.0000					3	0,000	
400	0750.119.124	INNER RING	1		00.00.0000		67,0X77,0X66,1			3	0,000	
410	0750.115.531	ROLLER CAGE	1		00.00.0000		77,0X101,0X29,0			3	0,000	

VKF Incidence factor

OTK Optional technical kit

ID Identification (output code)

SP Supplier plant



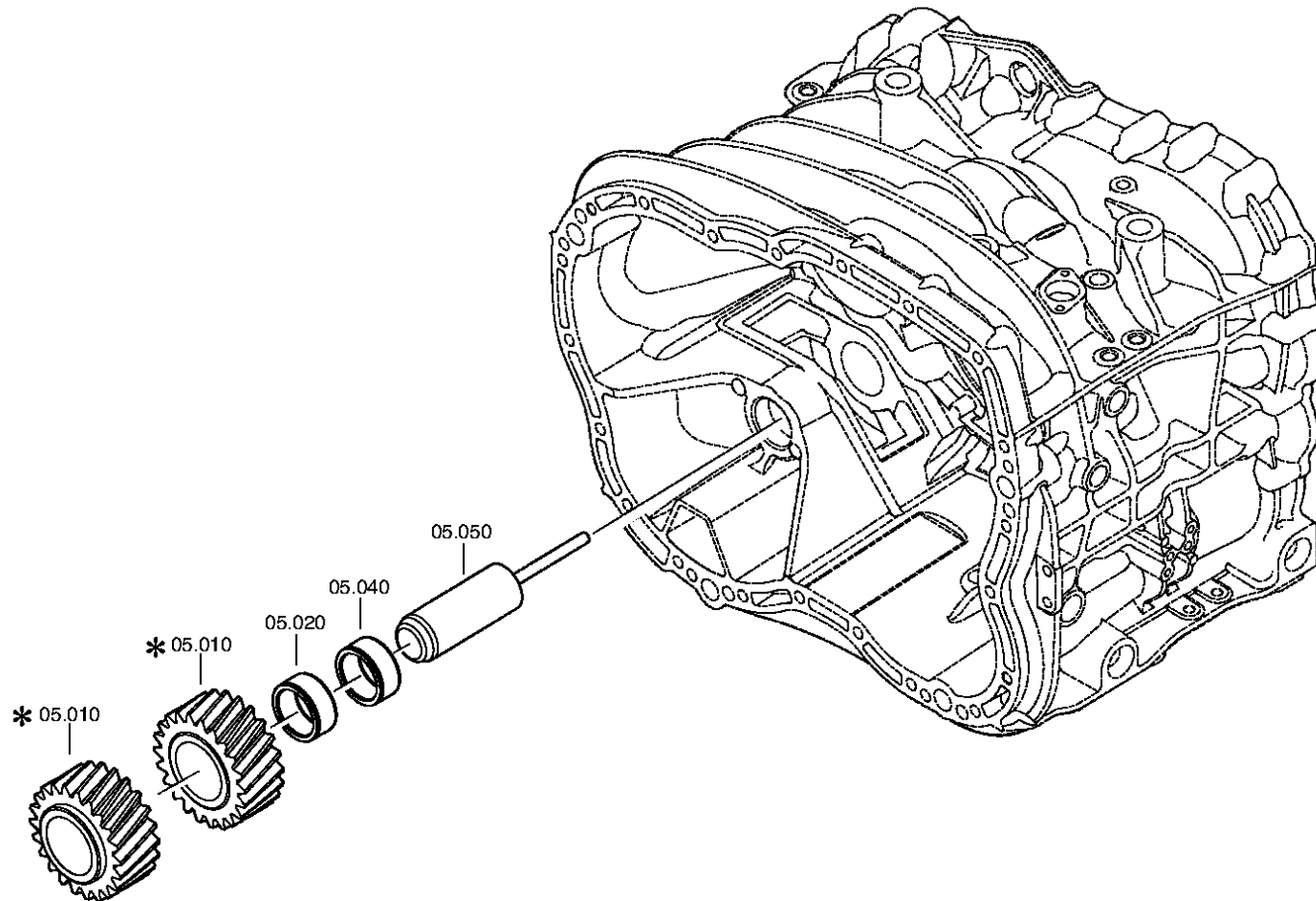
Pos.	Material number	Name	VKF	Amend. no.	Amend. start	Prod. no.	Material feature / tech. info.	OTK	External material no.	ID	Weight	SP
420	0750.115.531	ROLLER CAGE	1		00.00.0000		77,0X101,0X29,0			3	0,000	
440	1316.304.103	HELICAL GEAR	1		00.00.0000		Z32		133-242-3940	5	0,000	
600	---	AXIAL WASHER	1		00.00.0000		S= 7,30- 8,00(ABSTUFUNG:0, 10MM)			3	0,000	
---	1315.304.048	AXIAL WASHER	1		00.00.0000		A=8,00 IN 1315 304 042(2)			5	0,000	
---	1315.304.047	AXIAL WASHER	1		00.00.0000		A=7,90 IN 1315 304 042(2)			5	0,000	
---	1315.304.046	AXIAL WASHER	1		00.00.0000		A=7,80 IN 1315 304 042(2)			5	0,000	
---	1315.304.045	AXIAL WASHER	1		00.00.0000		A=7,70 IN 1315 304 042(2)			5	0,000	
---	1315.304.044	AXIAL WASHER	1		00.00.0000		A=7,60 IN 1315 304 042(2)			5	0,000	
---	1315.304.043	AXIAL WASHER	1		00.00.0000		A=7,50 IN 1315 304 042(2)			5	0,000	
---	1315.304.085	AXIAL WASHER	1		00.00.0000		A=7,40 IN 1315 304 042(2)			5	0,000	
---	1315.304.086	AXIAL WASHER	1		00.00.0000		A=7,30 IN 1315 304 042(2)			5	0,000	
610	0750.117.232	TAROLLBEARING	1		00.00.0000		42,0X40,3		820-400-2650	3	0,000	
612	0750.199.019	GREASE	4		00.00.0000		KLASSE A			3	0,000	
620	1312.204.040	SPLIT RING	1		00.00.0000		GESTANZT			3	0,000	
/10	---	SPLIT RING	2		00.00.0000		S= 4,60- 5,00(ABSTUFUNG:0, 10MM)			3	0,000	
---	0730.107.023	SPLIT RING	2		00.00.0000		A=5,00 IN 0730 106 207(2)		820-400-2660	5	0,000	
---	0730.107.022	SPLIT RING	2		00.00.0000		A=4,90 IN 0730 106 207(2)		820-400-2661	5	0,000	
---	0730.107.021	SPLIT RING	2		00.00.0000		A=4,80 IN 0730 106 207(2)		820-400-2662	5	0,000	
---	0730.107.020	SPLIT RING	2		00.00.0000		A=4,70 IN 0730 106 207(2)		820-400-2663	5	0,000	
---	0730.107.019	SPLIT RING	2		00.00.0000		A=4,60 IN 0730 106 207(2)		820-400-2664	5	0,000	
/20	0730.062.781	RETAINING RING	1		00.00.0000		ENTHALT.IN 0730 062 636(2)		820-400-2670	5	0,000	

VKF Incidence factor

OTK Optional technical kit

ID Identification (output code)

SP Supplier plant



Parts list
Page 1 from 1

Material number: 1367.002.030 16 S 2220 TO /
Plant: 161.05.01-1
Material-assembly-group-no: 1325.105.001



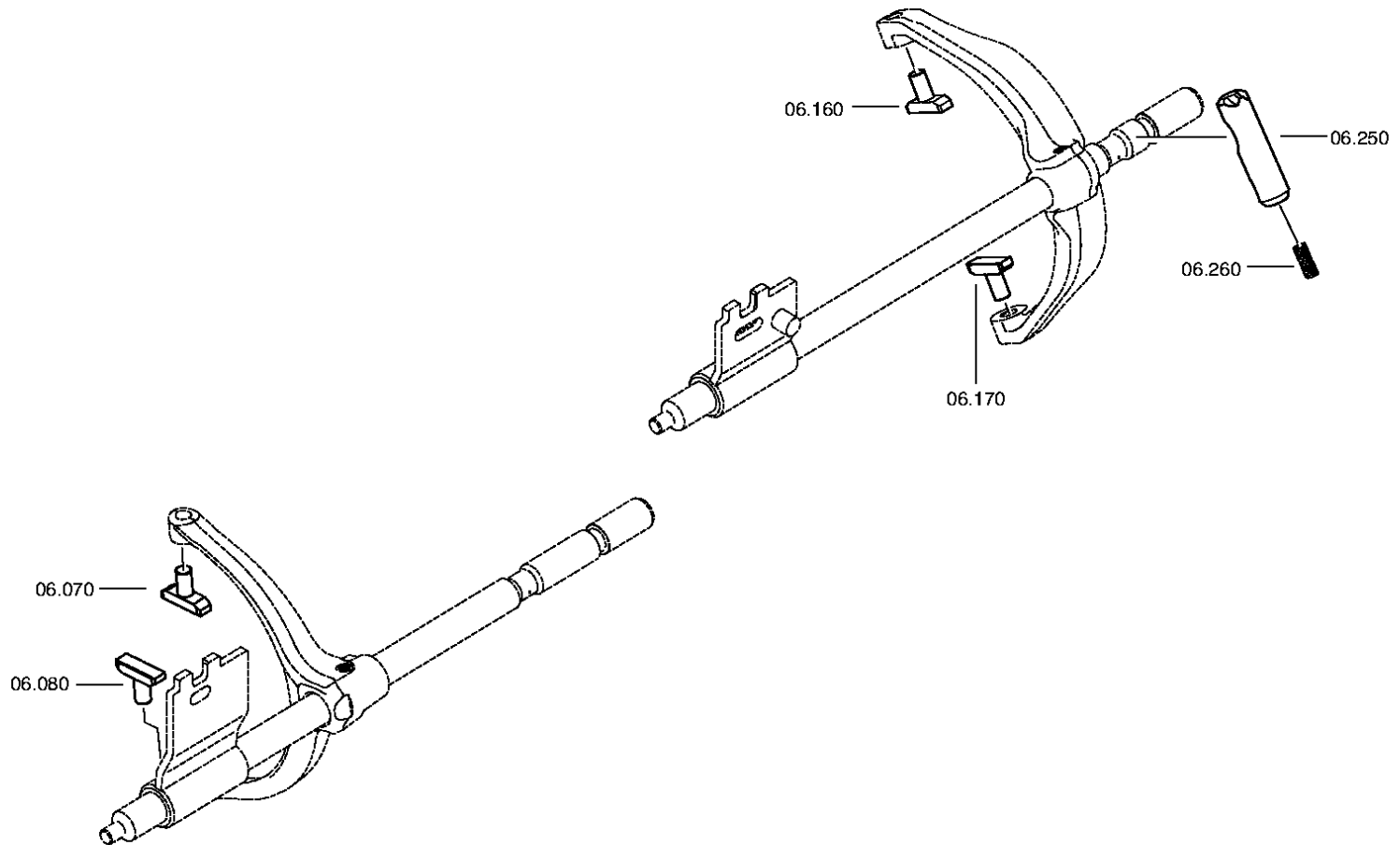
Pos.	Material number	Name	VKF	Amend. no.	Amend. start	Prod. no.	Material feature / tech. info.	OTK	External material no.	ID	Weight	SP
10	---	REVERSE IDLER GEAR	1	C0100641 3F10	00.00.0000	00.00.0000				3	0,000	
---	1316.305.001	REVERSE IDLER GEAR	1		00.00.0000		Z22 IN 1295 305 050(1)			5	0,000	
---	1316.305.008	REVERSE IDLER GEAR	1		00.00.0000		Z22 IN 1295 305 050(1)			5	0,000	
20	0750.115.369	NEEDLE CAGE	1		00.00.0000		45,0X57,0X25,0		820-400-2290	3	0,000	
40	0750.115.369	NEEDLE CAGE	1		00.00.0000		45,0X57,0X25,0		820-400-2290	3	0,000	
50	1316.201.030	REVERSE IDLER SHAFT	1		00.00.0000		KPL.16S221*SG*L=102			3	0,000	
/120	0631.329.295	SLOTPIN	1		00.00.0000		10X118			5	0,000	

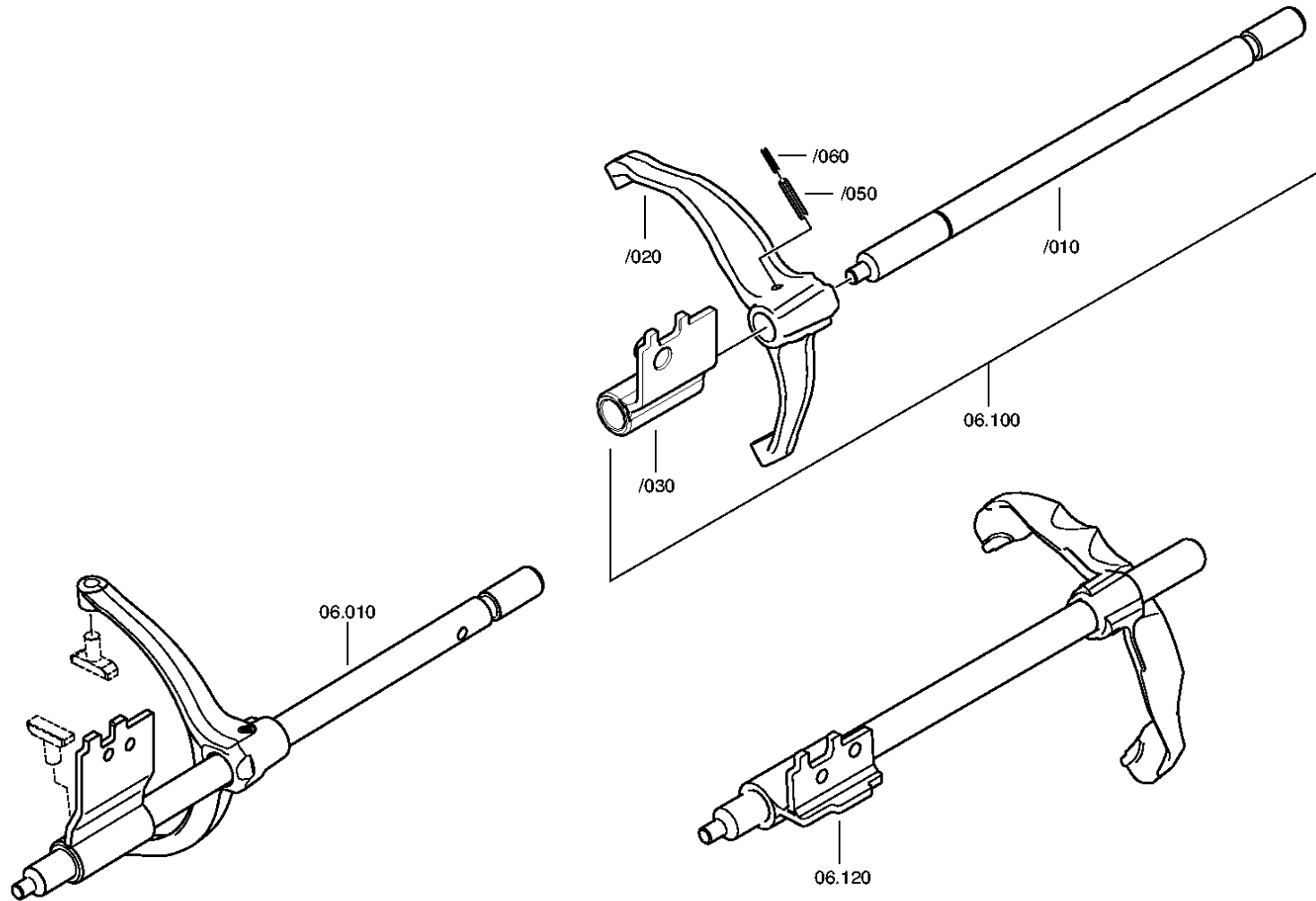
VKF Incidence factor

OTK Optional technical kit

ID Identification (output code)

SP Supplier plant







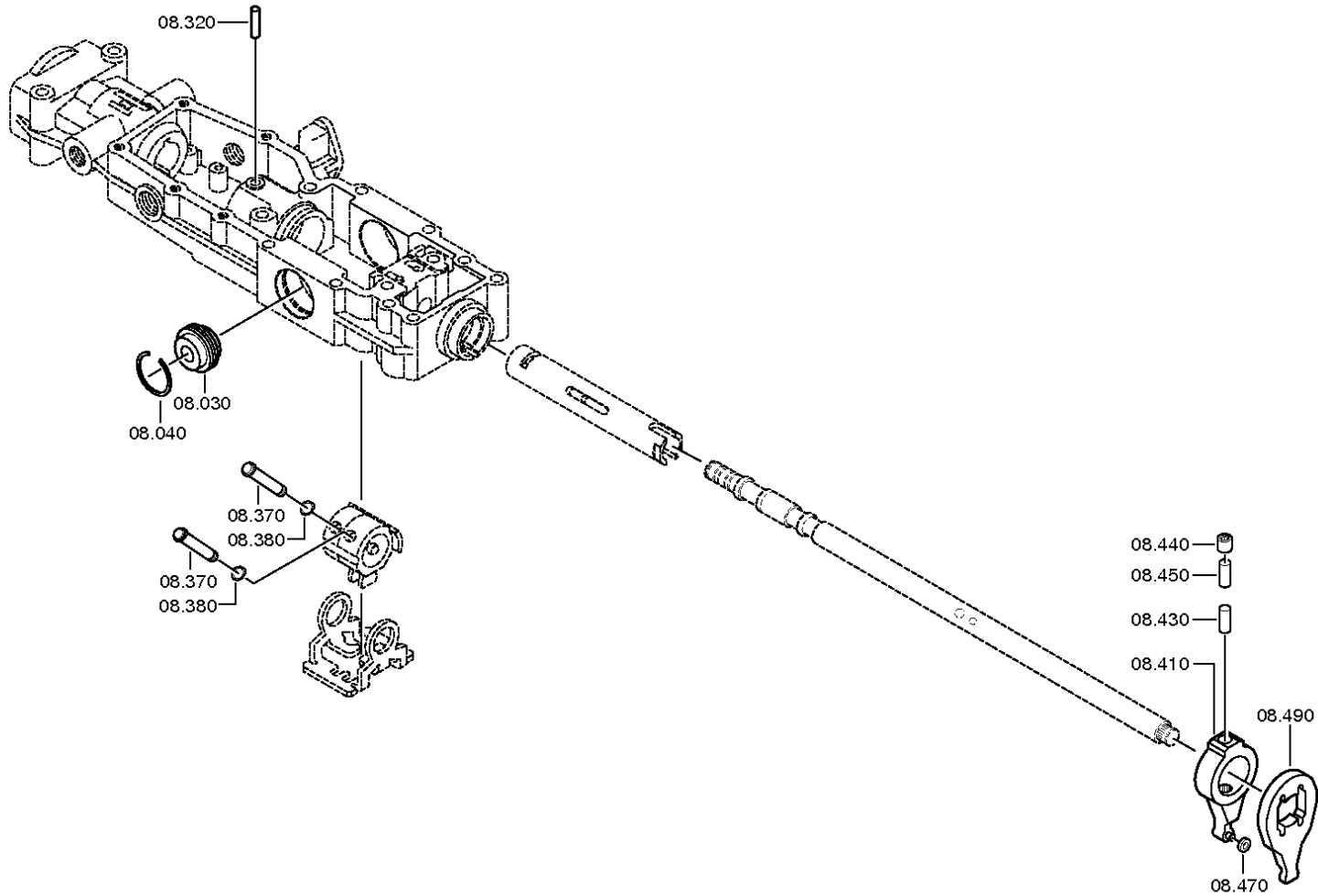
Pos.	Material number	Name	VKF	Amend. no.	Amend. start	Prod. no.	Material feature / tech. info.	OTK	External material no.	ID	Weight	SP
10	1356.206.004	GEAR SHIFT RAIL	1		00.00.0000		LANG MIT GANGERKENNUNG DAF			3	0,000	
70	1316.306.015	SLIDING PAD	1		00.00.0000					5	0,000	
80	1316.306.015	SLIDING PAD	1		00.00.0000					5	0,000	
100	1356.206.002	GEAR SHIFT RAIL	1		00.00.0000		KPL. *LANG			3	0,000	
120	1356.206.001	GEAR SHIFT RAIL	1		00.00.0000		KPL. *LANG			3	0,000	
160	1316.306.015	SLIDING PAD	1		00.00.0000					5	0,000	
170	1316.306.015	SLIDING PAD	1		00.00.0000					5	0,000	
250	1313.306.013	LOCKING PIN	1		00.00.0000					5	0,000	
260	0732.040.736	COMPRSPRING	1		00.00.0000				2150041300	5	5,200	

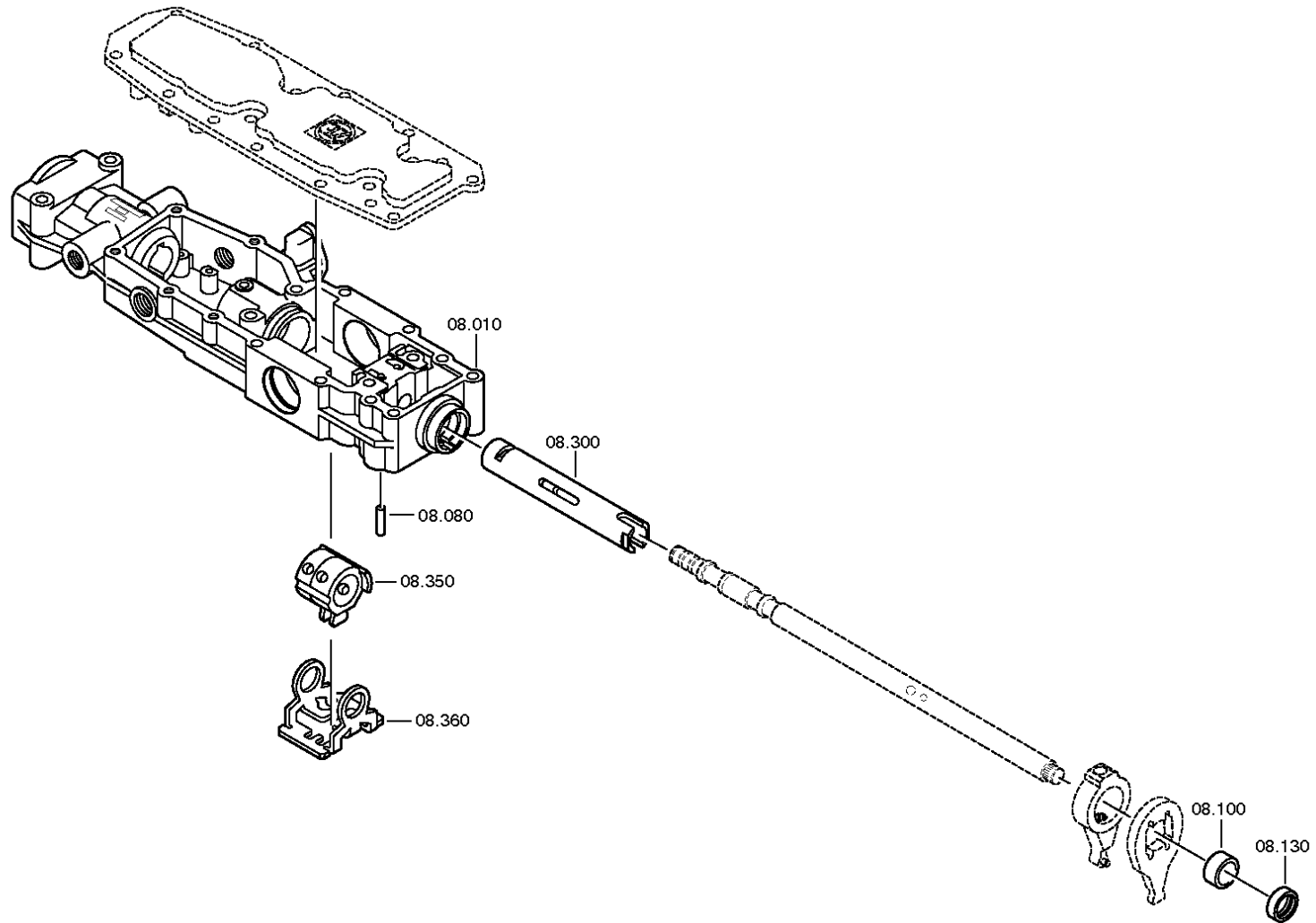
VKF Incidence factor

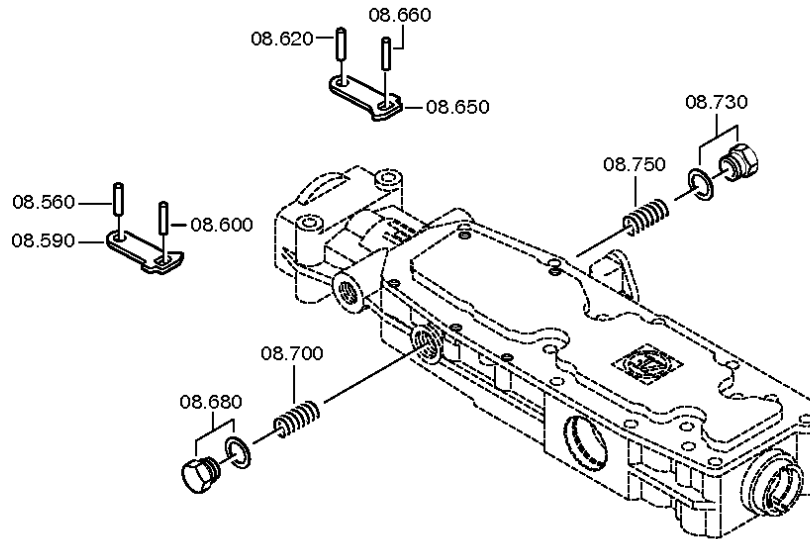
OTK Optional technical kit

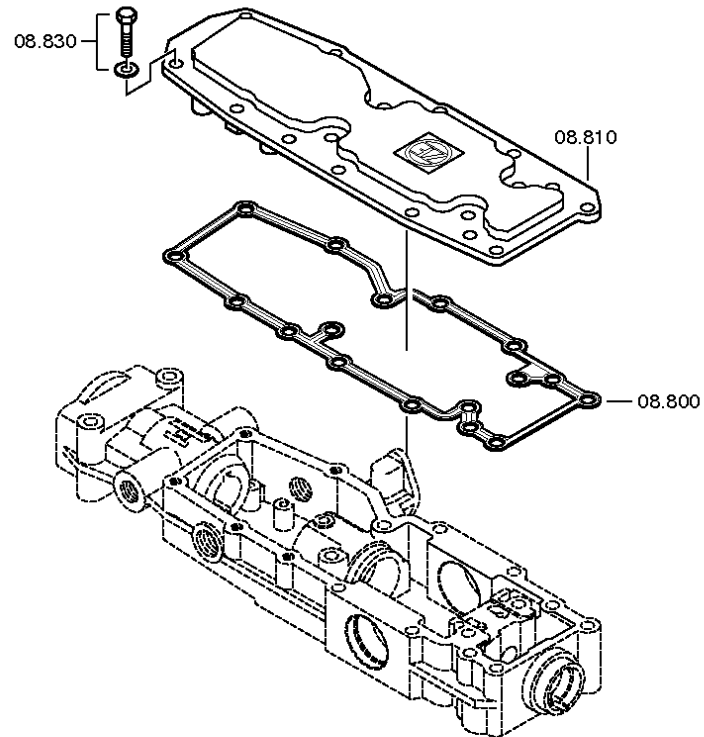
ID Identification (output code)

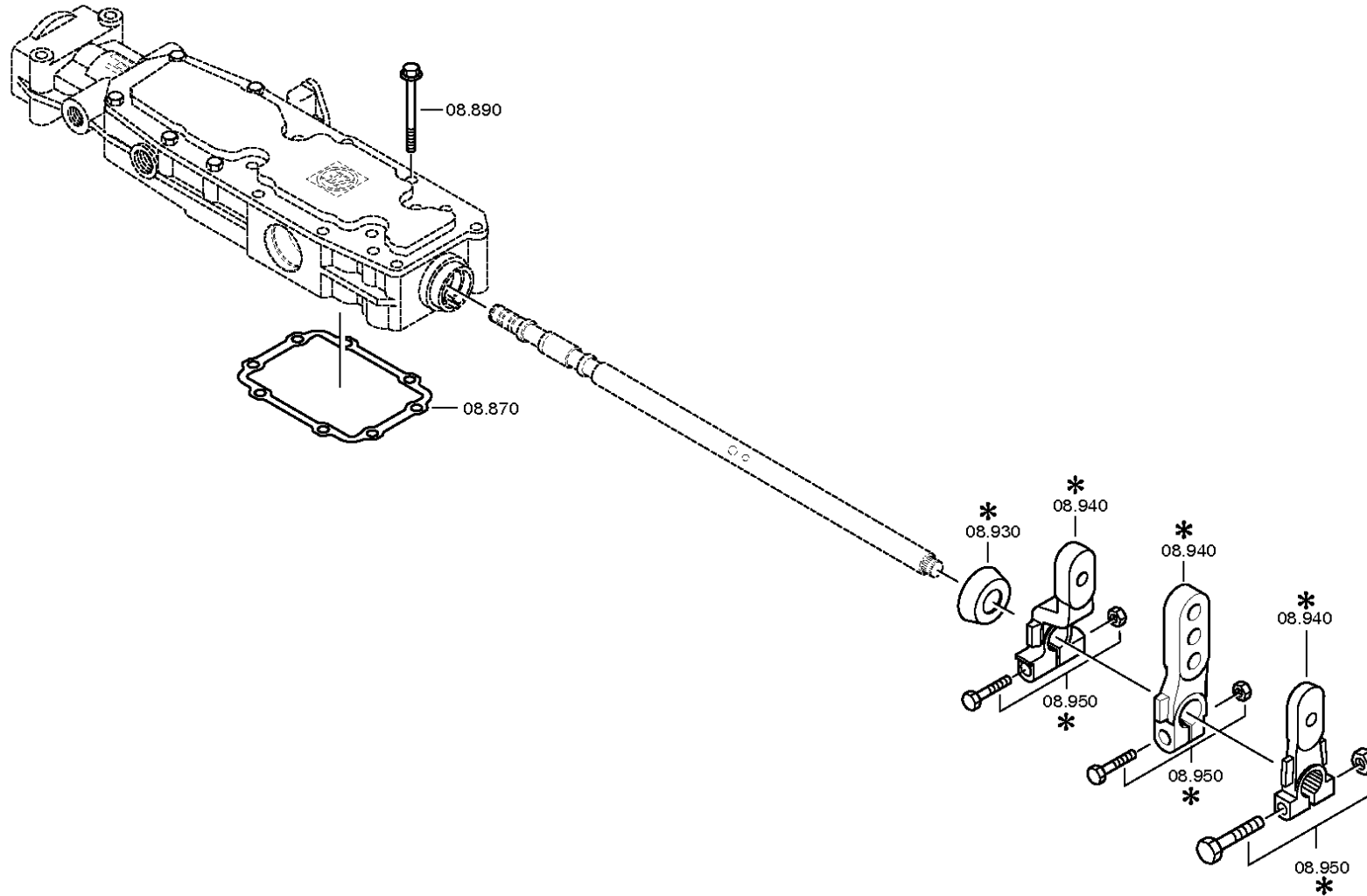
SP Supplier plant













Pos.	Material number	Name	VKF	Amend. no.	Amend. start	Prod. no.	Material feature / tech. info.	OTK	External material no.	ID	Weight	SP
10	1315.307.383	GEAR SHIFT HOUSING	1		00.00.0000					5	0,000	
30	0501.209.212	DETENT	1		00.00.0000		KPL.			5	0,000	
40	0630.532.130	V-RING	1		00.00.0000					5	0,000	
80	0631.306.123	CYLINDRICAL PIN	1		00.00.0000		8X24		190003901424	5	10	
100	0730.260.703	BUSH	1		00.00.0000		A=13,70			5	0,000	
130	0734.309.765	SHAFT SEAL	1		00.00.0000		28X42X11 FA.SKT			5	0,000	
300	1315.307.294	QUILL SHAFT	1		00.00.0000		ENTHALT.IN 1315.307.293(1)			5	0,000	
320	0731.201.702	PIN	1		00.00.0000					5	0,000	
350	1315.307.319	DRIVER	1		00.00.0000					5	0,000	
360	1315.307.218	LOCKING PIECE	1		00.00.0000					5	0,000	
370	1316.208.003	PIN	2		00.00.0000		KPL.			3	0,000	
380	0630.501.006	RETAINING RING	2		00.00.0000		10X1		SA 8220-02230	5	0,410	
410	1316.208.002	VALVE LEVER	1		00.00.0000		KPL.			3	0,000	
430	0731.201.732	PIN	1		00.00.0000					5	0,000	
440	0635.303.019	NEEDLE BUSH	1		00.00.0000		10X14X15			5	0,000	
450	0731.201.732	PIN	1		00.00.0000					5	0,000	
470	1315.307.226	ROLLER	1		00.00.0000				820-400-3340	5	0,000	
490	1315.307.292	LEVER	1		00.00.0000					5	0,000	
560	0631.306.832	CYLINDRICAL PIN	1		00.00.0000		6X20			5	0,000	
590	1315.307.203	DETENT LEVER	1		00.00.0000					5	0,000	
600	0631.306.832	CYLINDRICAL PIN	1		00.00.0000		6X20			5	0,000	
620	0631.306.832	CYLINDRICAL PIN	1		00.00.0000		6X20			5	0,000	
650	1315.307.203	DETENT LEVER	1		00.00.0000					5	0,000	
660	0631.306.832	CYLINDRICAL PIN	1		00.00.0000		6X20			5	0,000	
680	---	SCREW	1	C0100132 2B10	00.00.0000	00.00.0000	M22X1,5			3	0,000	
---	1315.307.019	SCREW	1		00.00.0000		M22X1,5 IN 1315 307 363(2)			5	0,000	
---	0730.009.515	SEALING RING	1		00.00.0000		A22X27			5	0,000	
700	0732.041.500	COMPRSPRING	1		00.00.0000					5	0,000	

VKF Incidence factor

OTK Optional technical kit

ID Identification (output code)

SP Supplier plant



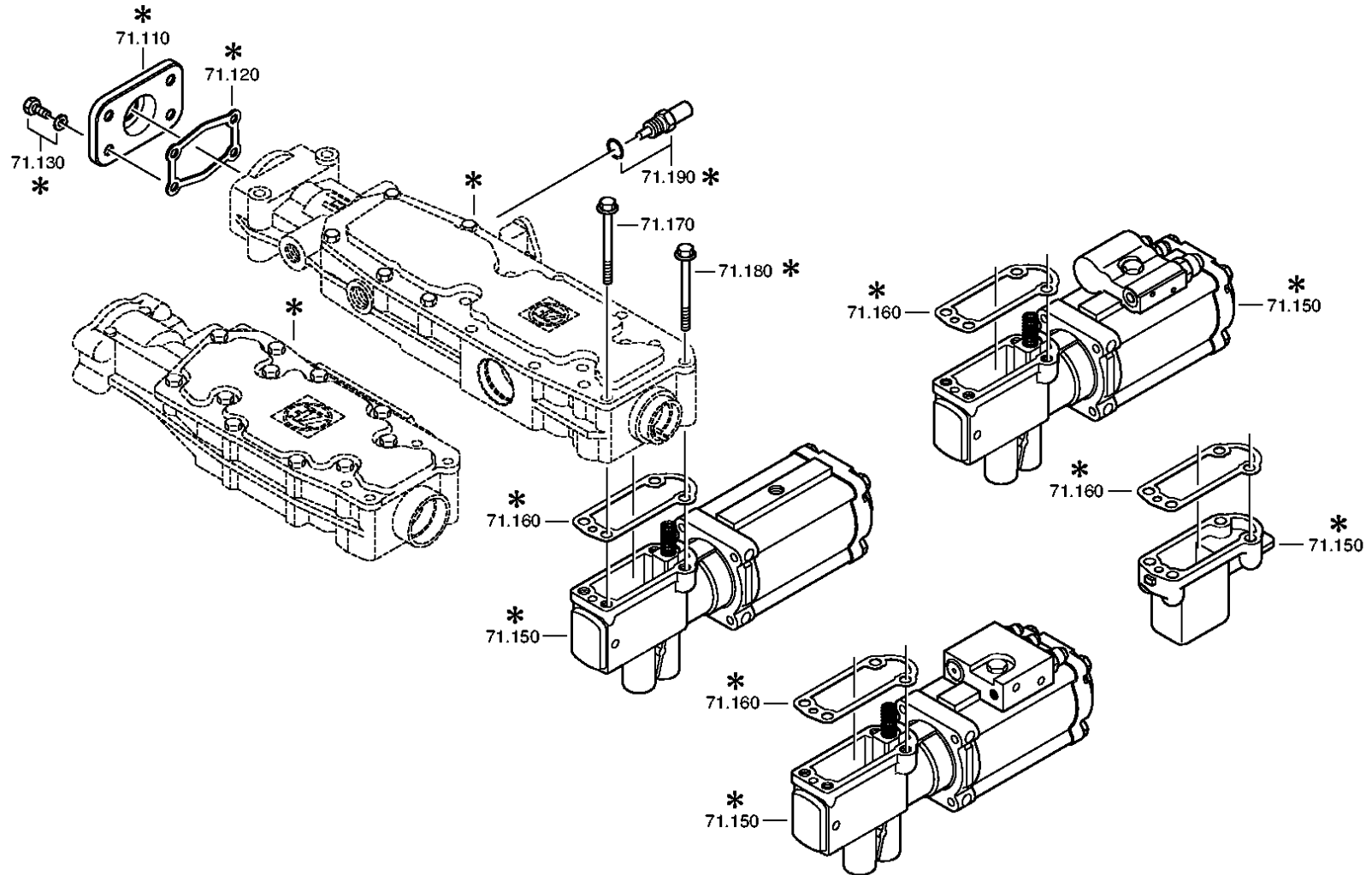
Pos.	Material number	Name	VKF	Amend. no.	Amend. start	Prod. no.	Material feature / tech. info.	OTK	External material no.	ID	Weight	SP
730	---	SCREW	1	C0100132 2B10	00.00.0000	00.00.0000	M22X1,5			3	0,000	
---	1315.307.019	SCREW	1		00.00.0000		M22X1,5 IN 1315 307 363(2)			5	0,000	
---	0730.009.515	SEALING RING	1		00.00.0000		A22X27			5	0,000	
750	0732.041.500	COMPRSPRING	1		00.00.0000					5	0,000	
800	0501.324.072	GASKET	1	C0100335 3F10	00.00.0000	00.00.0000				5	0,000	
810	1315.307.286	COVER	1	C0100002 0A10	00.00.0000	00.00.0000				5	0,000	
830	---	HEXAGON BOLT	5	Z0000705 6712	01.01.2012	01.01.2012	M8X25			3	0,000	
---	0636.016.401	HEXAGON BOLT	5	Z0000705 6710	30.08.2010	30.08.2010	M8X25			5	0,000	
---	0630.100.295	WASHER	5	Z0000715 8414	01.01.2012	01.01.2012				5	0,000	
870	1315.307.013	GASKET	1		00.00.0000				133-138-1020	5	0,000	
890	0736.300.137	HEXAGON BOLT	8	Z0000919 5410	01.01.2012	01.01.2012	M8X80 M8X80			5	0,000	
930	1341.307.104	PROTECTING CAP	1	C0100703 4F10	00.00.0000	00.00.0000				5	0,000	

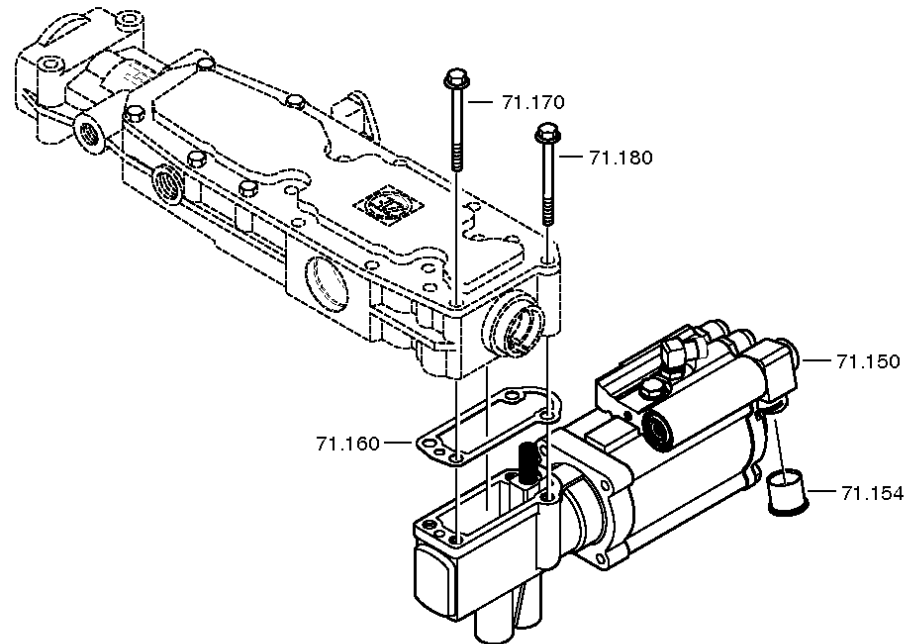
VKF Incidence factor

OTK Optional technical kit

ID Identification (output code)

SP Supplier plant







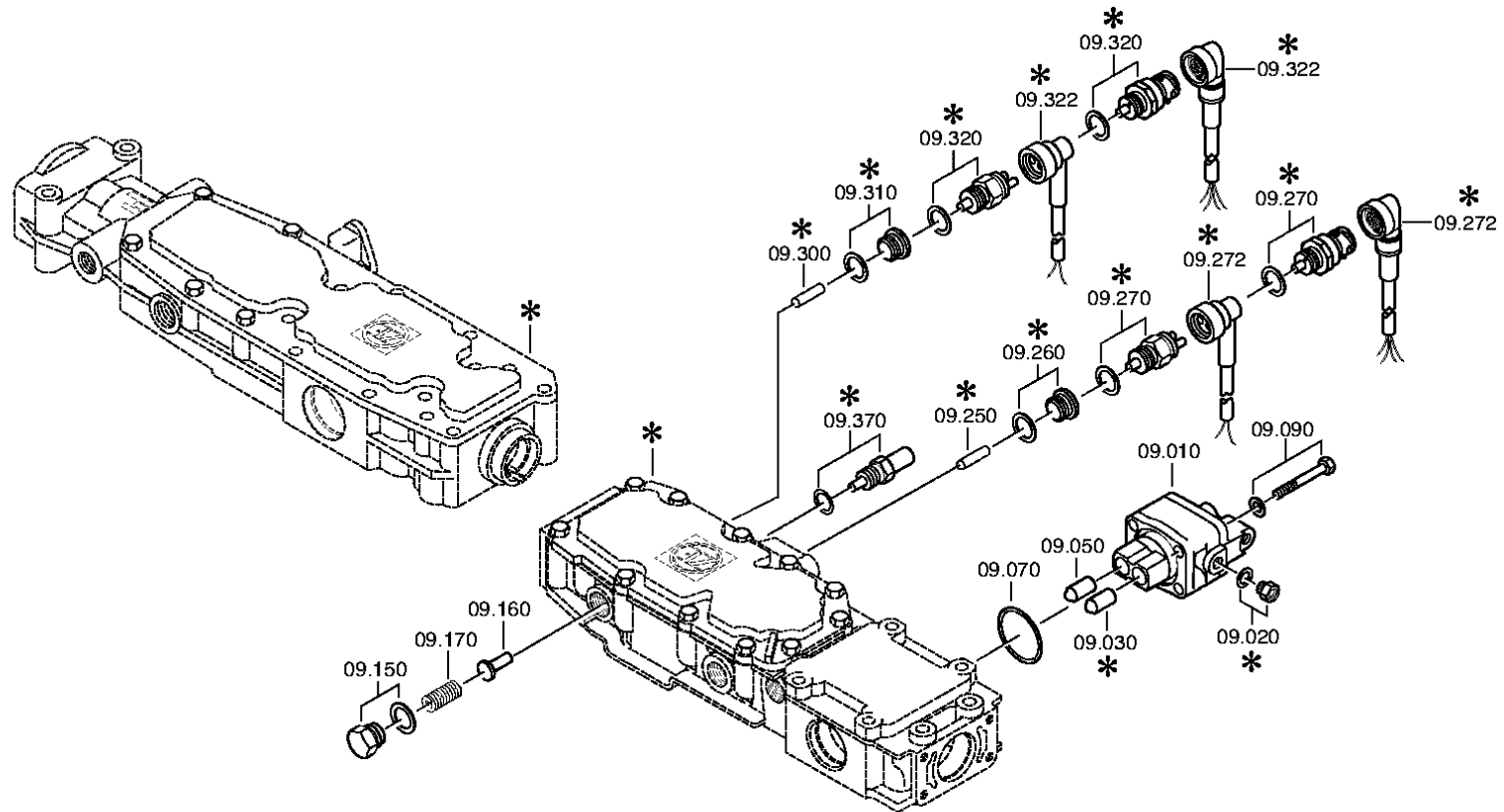
Pos.	Material number	Name	VKF	Amend. no.	Amend. start	Prod. no.	Material feature / tech. info.	OTK	External material no.	ID	Weight	SP
110	1341.307.113	COVER	1	Z0000927 1410	01.01.2012	01.01.2012				5	0,000	
130	---	HEXAGON BOLT	4	Z0000789 1111	01.01.2012	01.01.2012	M8X20			3	0,000	
---	0636.100.796	HEXAGON BOLT	4	Z0000789 1120	08.09.2010	08.09.2010	M8X20			5	0,000	
---	0630.100.295	WASHER	4	Z0000715 8414	01.01.2012	01.01.2012				5	0,000	
150	0501.217.407	PNEUMSERVUNIT	1	Z0000402 8014	13.05.2009	13.05.2009	KPL. PSE1 MIT EL.SAV6(GV-FREIGABE)			5	0,000	
154	0700.300.427	PROTECTING CAP	1		00.00.0000					5	0,005	
160	1315.307.242	GASKET	1	Z0000402 8014	13.05.2009	13.05.2009				5	0,000	
170	0736.300.137	HEXAGON BOLT	2	Z0000919 5410	01.01.2012	01.01.2012	M8X80 M8X80			5	0,000	
180	---	HEXAGON BOLT	2	Z0000919 5410	01.01.2012	01.01.2012	M8X80			3	0,000	
---	0736.300.137	HEXAGON BOLT	2	Z0000919 5414	01.09.2010	01.09.2010	M8X80 M8X80			5	0,000	
---	0666.790.033	SEALCOMPOUND	2	Z0000919 5414	01.09.2010	01.09.2010				5	0,310	
590	0637.510.211	PLUG	1	Z0000402 8014	13.05.2009	13.05.2009				5	0,000	
600	0637.510.211	PLUG	1	Z0000402 8014	13.05.2009	13.05.2009				5	0,000	

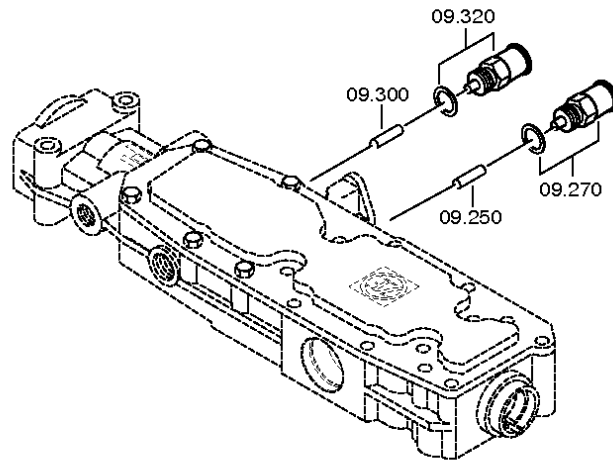
VKF Incidence factor

OTK Optional technical kit

ID Identification (output code)

SP Supplier plant







Pos.	Material number	Name	VKF	Amend. no.	Amend. start	Prod. no.	Material feature / tech. info.	OTK	External material no.	ID	Weight	SP
10	6038.202.043	CUT-OFF VALVE	1	C0100214 3C10	00.00.0000	00.00.0000	KPL.H-H*ZULUFTDROSSEL 1,55		5 6065 0	3	0,000	
30	0501.209.188	BALL ROLLER	1		00.00.0000		KPL.		5 6102 0	5	0,000	
50	0501.209.188	BALL ROLLER	1		00.00.0000		KPL.		5 6102 0	5	0,000	
70	0634.313.505	O-RING	1		00.00.0000		42X3			5	0,000	
90	---	HEXAGON BOLT	4	Z0000705 4112	01.01.2012	01.01.2012	M8X65			3	0,000	
---	0636.100.519	HEXAGON BOLT	4	Z0000705 4110	04.08.2010	04.08.2010	M8X65			5	0,000	
---	0630.100.295	WASHER	4	Z0000715 8414	01.01.2012	01.01.2012				5	0,000	
150	---	SCREW	1	C0100132 2B10	00.00.0000	00.00.0000	M22X1,5			3	0,000	
---	1315.307.019	SCREW	1		00.00.0000		M22X1,5 IN 1315 307 363(2)			5	0,000	
---	0730.009.515	SEALING RING	1		00.00.0000		A22X27			5	0,000	
160	1315.307.384	BOLT	1	C0100395 8B10	00.00.0000	00.00.0000	ENTHALT.IN 1250 307 589(2)			5	0,000	
170	0732.041.612	COMPRSPRING	1		00.00.0000					5	0,000	
250	0731.201.446	PIN	1		00.00.0000		ENTHALT.IN 0731 201 445(2)			5	0,000	
252	0750.199.019	GREASE	1		00.00.0000		KLASSE A			3	0,000	
270	---	SWITCH	1		00.00.0000		OEFF*45N.M*DICHTRING* BAJONETT*SCHUTZKAPPE			3	0,000	
---	0501.216.474	SWITCH	1		00.00.0000		KPL.			5	0,050	
---	0634.801.062	SEALING RING	1		00.00.0000		18X24			5	0,001	
---	0700.300.427	PROTECTING CAP	1		00.00.0000					5	0,005	
300	0731.208.230	PIN	1		00.00.0000		A=30,0			5	0,000	
302	0750.199.019	GREASE	1		00.00.0000		KLASSE A			3	0,000	
320	---	SWITCH	1		00.00.0000		SCHL*45N.M*DICHTRING* BAJONETT*SCHUTZKAPPE			3	0,000	
---	0501.210.058	SWITCH	1		00.00.0000		KPL.		1864900531	5	0,000	
---	0634.801.062	SEALING RING	1		00.00.0000		18X24			5	0,001	

VKF Incidence factor

OTK Optional technical kit

ID Identification (output code)

SP Supplier plant



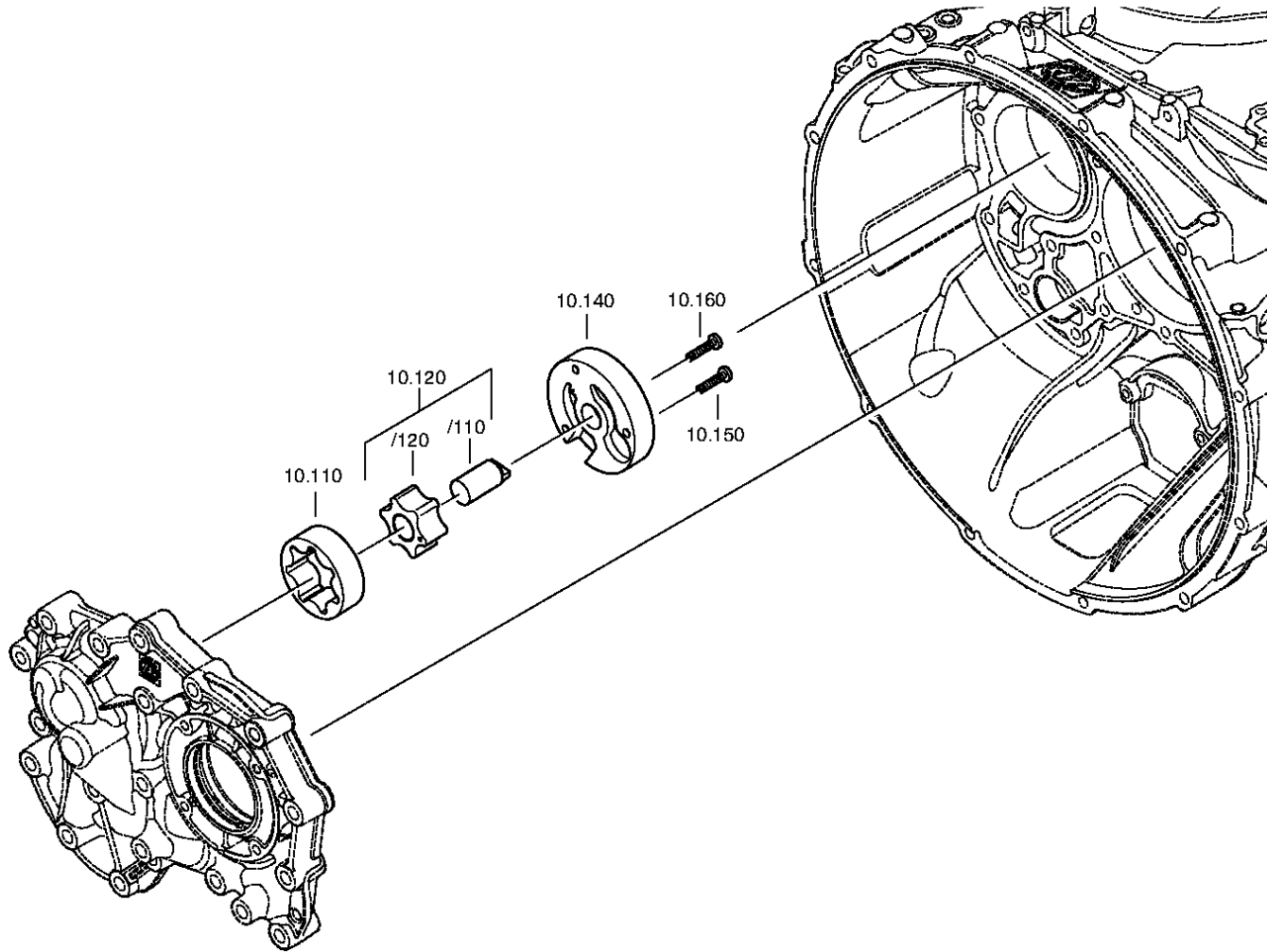
Pos.	Material number	Name	VKF	Amend. no.	Amend. start	Prod. no.	Material feature / tech. info.	OTK	External material no.	ID	Weight	SP
---	0700.300.427	PROTECTING CAP	1		00.00.0000					5	0,005	

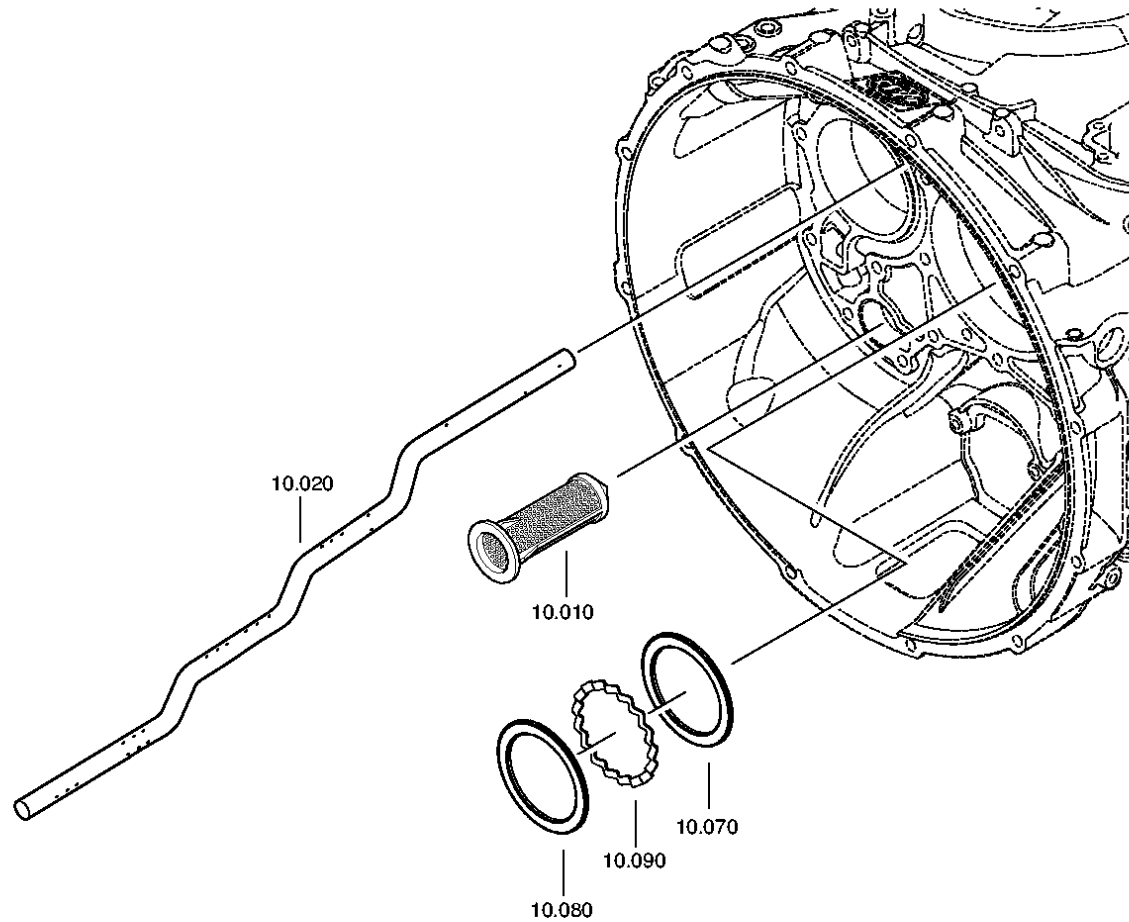
VKF Incidence factor

OTK Optional technical kit

ID Identification (output code)

SP Supplier plant





Parts list
Page 1 from 1

Material number: 1367.002.030 16 S 2220 TO /
Plant: 161.10.01-1
Material-assembly-group-no: 1356.110.002



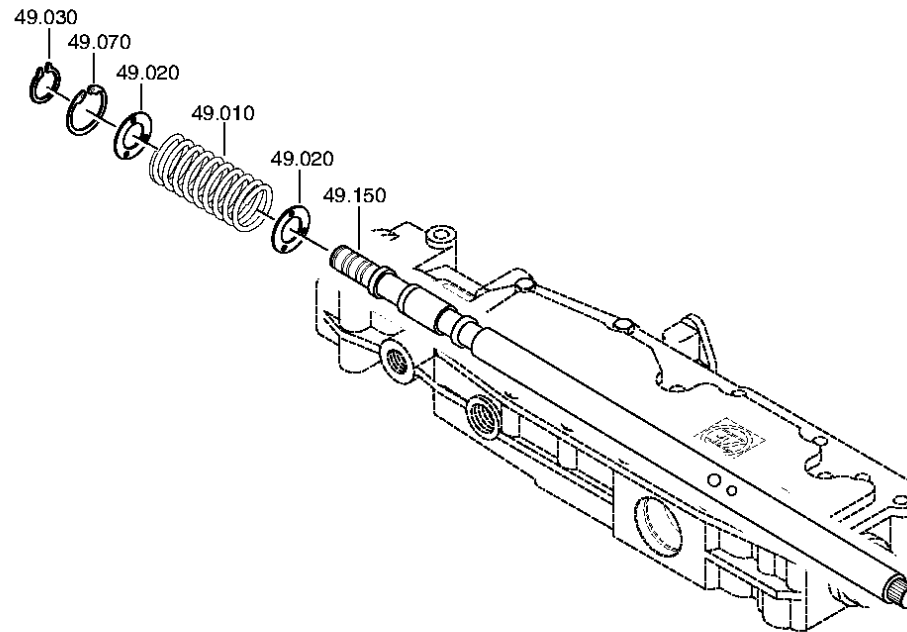
Pos.	Material number	Name	VKF	Amend. no.	Amend. start	Prod. no.	Material feature / tech. info.	OTK	External material no.	ID	Weight	SP
10	0501.318.802	SCREEN INSERT	1		00.00.0000				5718 742 08	5	0,000	
20	1356.301.001	OIL TUBE	1		00.00.0000		ECO 4 16G LANG			5	0,000	
70	0730.300.304	WASHER	1		00.00.0000		A=3,30			5	0,000	
80	0730.150.766	WASHER	1		00.00.0000					5	0,000	
90	1315.302.040	SPACER RING	1		00.00.0000					5	0,000	
110	1315.303.027	ROTOR	1		00.00.0000				169-833-0010	5	0,000	
120	1314.202.039	PUMP SHAFT	1		00.00.0000		KPL.		169-831-0020	3	0,000	
140	1325.303.017	PUMP COVER	1		00.00.0000					5	0,000	
150	---	TORX SCREW	1		00.00.0000		M6X30			3	0,000	
---	0736.101.076	TORX SCREW	1		00.00.0000					5	8	
160	---	TORX SCREW	1		00.00.0000		M6X30			3	0,000	
---	0736.101.076	TORX SCREW	1		00.00.0000					5	8	

VKF Incidence factor

OTK Optional technical kit

ID Identification (output code)

SP Supplier plant





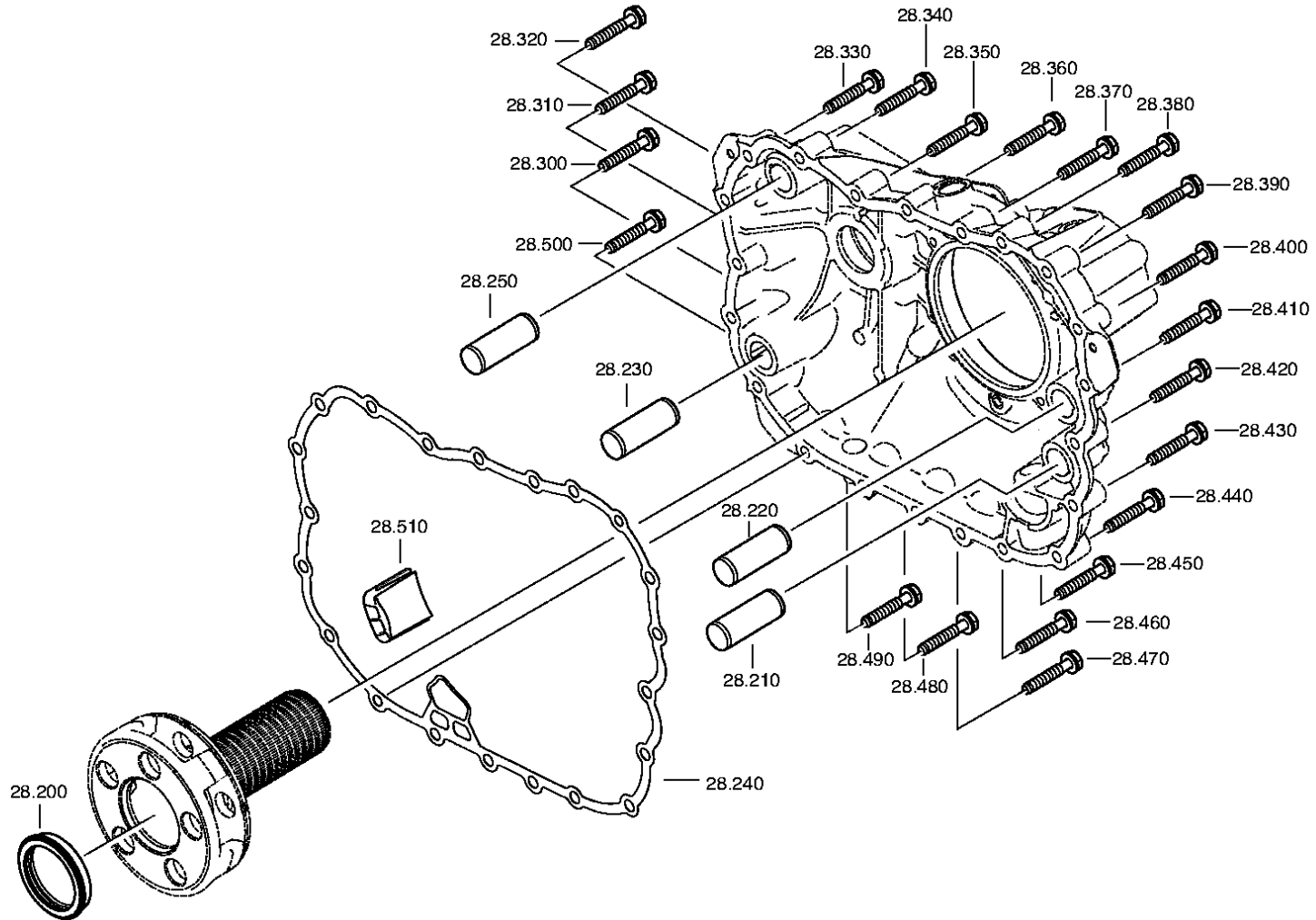
Pos.	Material number	Name	VKF	Amend. no.	Amend. start	Prod. no.	Material feature / tech. info.	OTK	External material no.	ID	Weight	SP
10	0732.040.237	COMPRSPRING	1		00.00.0000				2150036500	5	30	
20	0730.301.376	WASHER	2	Z0000891 7410	01.01.2012	01.01.2012				5	0,000	
30	0630.532.138	V-RING	1		00.00.0000				5004143	5	0,000	
70	0630.502.022	RETAINING RING	1		00.00.0000		40X1,75			5	4,800	
150	1315.307.327	GEAR SHIFT SHAFT	1		00.00.0000		ENTHALT.IN 1315 307 296(1)			5	0,000	

VKF Incidence factor

OTK Optional technical kit

ID Identification (output code)

SP Supplier plant





Pos.	Material number	Name	VKF	Amend. no.	Amend. start	Prod. no.	Material feature / tech. info.	OTK	External material no.	ID	Weight	SP
200	1316.332.109	PRESSURE DISC	1		00.00.0000					5	0,000	
210	0731.300.002	CYLINDRICAL PIN	1		00.00.0000					5	0,000	
220	0731.300.002	CYLINDRICAL PIN	1		00.00.0000					5	0,000	
230	0731.300.002	CYLINDRICAL PIN	1		00.00.0000					5	0,000	
240	0501.323.705	GASKET	1		00.00.0000					5	0,000	
250	0731.300.002	CYLINDRICAL PIN	1		00.00.0000					5	0,000	
300	0636.016.405	HEXAGON BOLT	1	Z0000706 0111	01.01.2012	01.01.2012	M10X60			5	0,000	
310	0636.016.405	HEXAGON BOLT	1	Z0000706 0111	01.01.2012	01.01.2012	M10X60			5	0,000	
320	0636.016.405	HEXAGON BOLT	1	Z0000706 0111	01.01.2012	01.01.2012	M10X60			5	0,000	
330	0636.016.405	HEXAGON BOLT	1	Z0000706 0111	01.01.2012	01.01.2012	M10X60			5	0,000	
340	0636.016.405	HEXAGON BOLT	1	Z0000706 0111	01.01.2012	01.01.2012	M10X60			5	0,000	
350	0636.016.405	HEXAGON BOLT	1	Z0000706 0111	01.01.2012	01.01.2012	M10X60			5	0,000	
360	0636.016.405	HEXAGON BOLT	1	Z0000706 0111	01.01.2012	01.01.2012	M10X60			5	0,000	
370	0636.016.405	HEXAGON BOLT	1	Z0000706 0111	01.01.2012	01.01.2012	M10X60			5	0,000	
380	0636.016.405	HEXAGON BOLT	1	Z0000706 0111	01.01.2012	01.01.2012	M10X60			5	0,000	
390	0636.016.405	HEXAGON BOLT	1	Z0000706 0111	01.01.2012	01.01.2012	M10X60			5	0,000	
400	0636.016.405	HEXAGON BOLT	1	Z0000706 0111	01.01.2012	01.01.2012	M10X60			5	0,000	
410	0636.016.405	HEXAGON BOLT	1	Z0000706 0111	01.01.2012	01.01.2012	M10X60			5	0,000	
420	0636.016.405	HEXAGON BOLT	1	Z0000706 0111	01.01.2012	01.01.2012	M10X60			5	0,000	

VKF Incidence factor

OTK Optional technical kit

ID Identification (output code)

SP Supplier plant



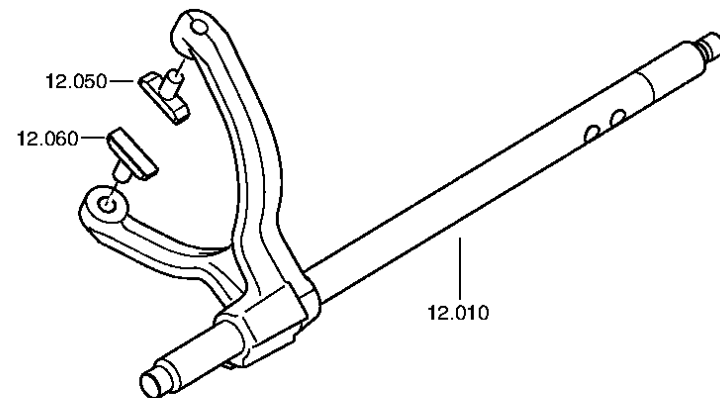
Pos.	Material number	Name	VKF	Amend. no.	Amend. start	Prod. no.	Material feature / tech. info.	OTK	External material no.	ID	Weight	SP
430	0636.016.405	HEXAGON BOLT	1	Z0000706 0111	01.01.2012	01.01.2012	M10X60			5	0,000	
440	0636.016.405	HEXAGON BOLT	1	Z0000706 0111	01.01.2012	01.01.2012	M10X60			5	0,000	
450	0636.016.405	HEXAGON BOLT	1	Z0000706 0111	01.01.2012	01.01.2012	M10X60			5	0,000	
460	0636.016.405	HEXAGON BOLT	1	Z0000706 0111	01.01.2012	01.01.2012	M10X60			5	0,000	
470	0636.016.405	HEXAGON BOLT	1	Z0000706 0111	01.01.2012	01.01.2012	M10X60			5	0,000	
480	0636.016.405	HEXAGON BOLT	1	Z0000706 0111	01.01.2012	01.01.2012	M10X60			5	0,000	
490	0636.016.405	HEXAGON BOLT	1	Z0000706 0111	01.01.2012	01.01.2012	M10X60			5	0,000	
500	0636.016.405	HEXAGON BOLT	1	Z0000706 0111	01.01.2012	01.01.2012	M10X60			5	0,000	

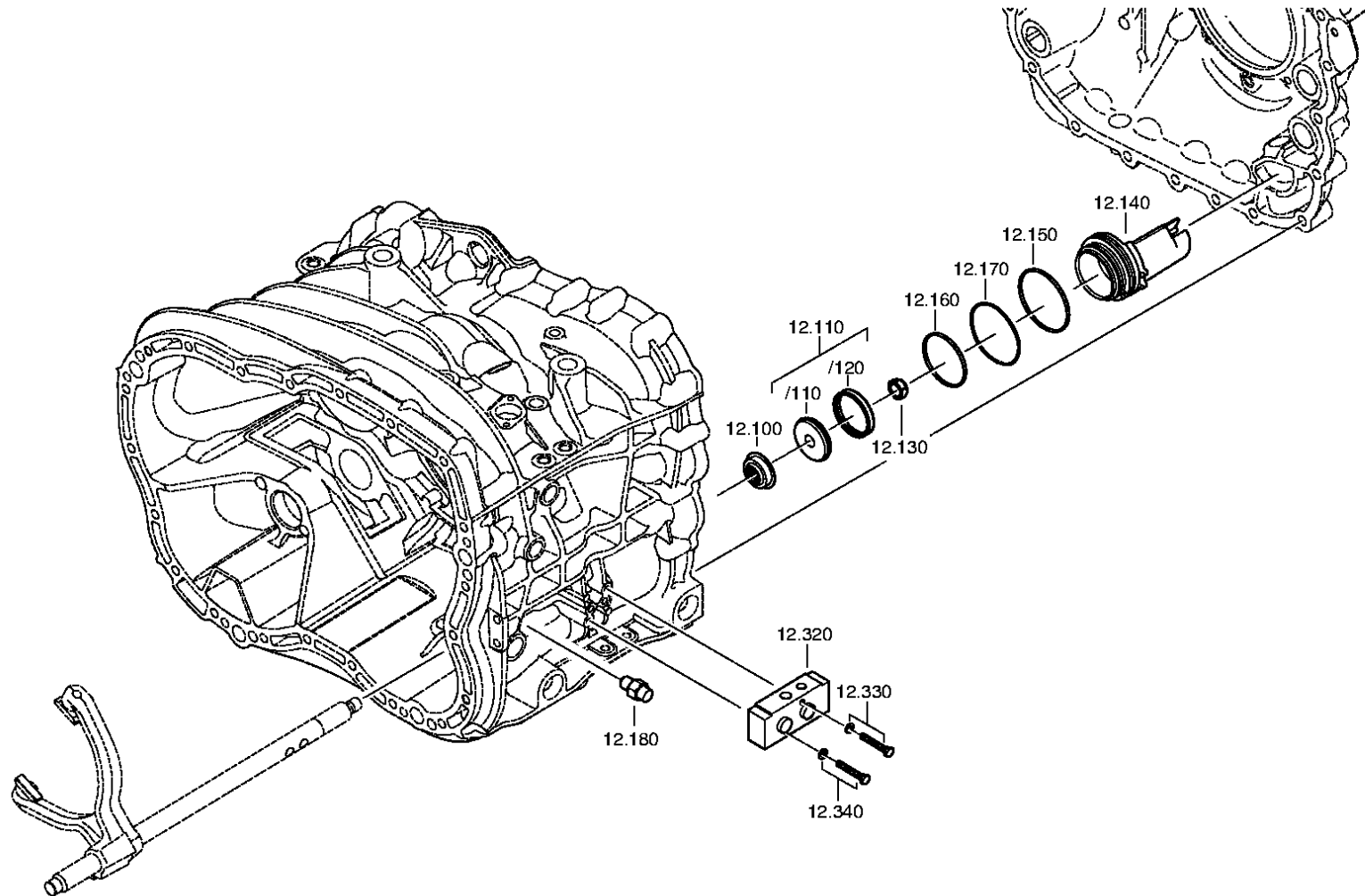
VKF Incidence factor

OTK Optional technical kit

ID Identification (output code)

SP Supplier plant







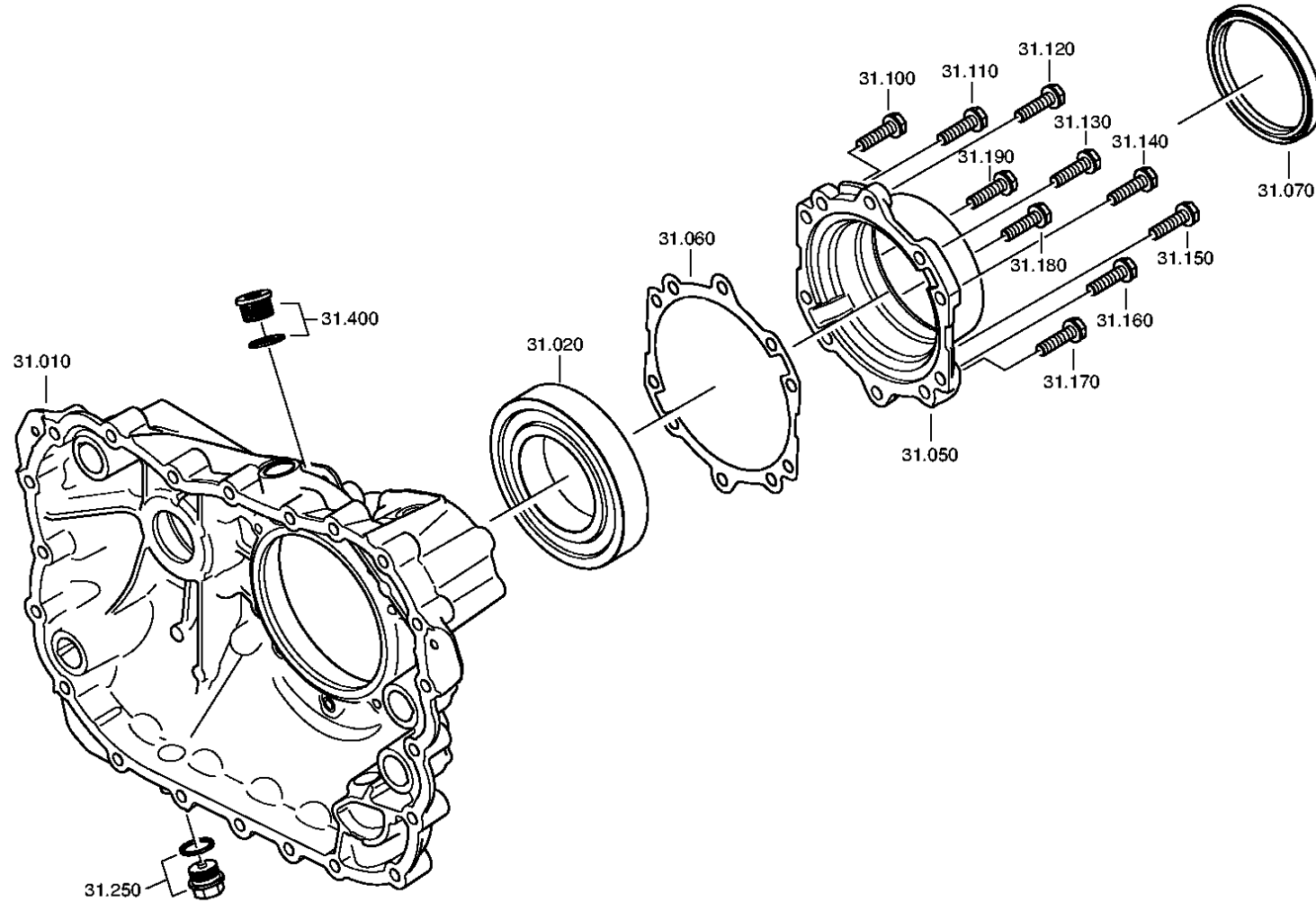
Pos.	Material number	Name	VKF	Amend. no.	Amend. start	Prod. no.	Material feature / tech. info.	OTK	External material no.	ID	Weight	SP
10	1356.212.002	GEAR SHIFT RAIL	1		00.00.0000		KPL.GV*E32 LANG*16 GANG			3	0,000	
50	1316.306.015	SLIDING PAD	1		00.00.0000					5	0,000	
60	1316.306.015	SLIDING PAD	1		00.00.0000					5	0,000	
100	0750.112.131	FLANGE PACKING	1	Z0000358 8010	31.12.2010	31.12.2010	25X40X15		820-400-2880	3	0,000	
110	1315.212.008	PISTON	1		00.00.0000		KPL.		1831971	3	0,000	
/110	---	PISTON	1		00.00.0000		GV SINTER/STAHL			3	0,000	
---	1315.312.020	PISTON	1		00.00.0000		GV			5	0,000	
---	1315.312.003	PISTON	1		00.00.0000		GV			5	0,000	
/120	0750.112.177	DOUBLE U-PACKING	1		00.00.0000		55X63X9,4		172-255-1720	3	0,000	
130	0737.300.037	LOCKING NUT	1	Z0000892 9010	01.01.2012	01.01.2012	MS16X1,5			5	0,000	
140	1325.312.012	CYLINDER	1		00.00.0000					5	0,000	
150	0634.313.018	O-RING	1		00.00.0000		82X3			5	0,000	
160	0634.313.320	O-RING	1		00.00.0000		67X3		820-400-2910	5	0,000	
170	1315.312.034	SPRING	1		00.00.0000					5	0,000	
180	---	DETENT PLUNGER	1		00.00.0000		235N*50N.M			3	0,000	
---	1324.207.033	DETENT PLUNGER	1		00.00.0000		KPL. *235 N			3	0,000	
---	0730.008.604	SEALING RING	1	C0100986 0C10	00.00.0000	00.00.0000	A16X22			5	0,000	
300	0637.510.665	PLUG	1		00.00.0000		M10X1			5	0,000	
320	0501.215.358	5/2 WAY VALVE	1		00.00.0000		KPL.BG			5	0,000	
/20	0634.314.020	O-RING	1		00.00.0000		8X2			5	0,000	
/22	0634.314.020	O-RING	1		00.00.0000		8X2			5	0,000	
330	0636.015.677	COMBISCREW	1	C0100600 4F10	00.00.0000	00.00.0000	M6X40			5	0,000	
340	0636.015.677	COMBISCREW	1	C0100600 4F10	00.00.0000	00.00.0000	M6X40			5	0,000	

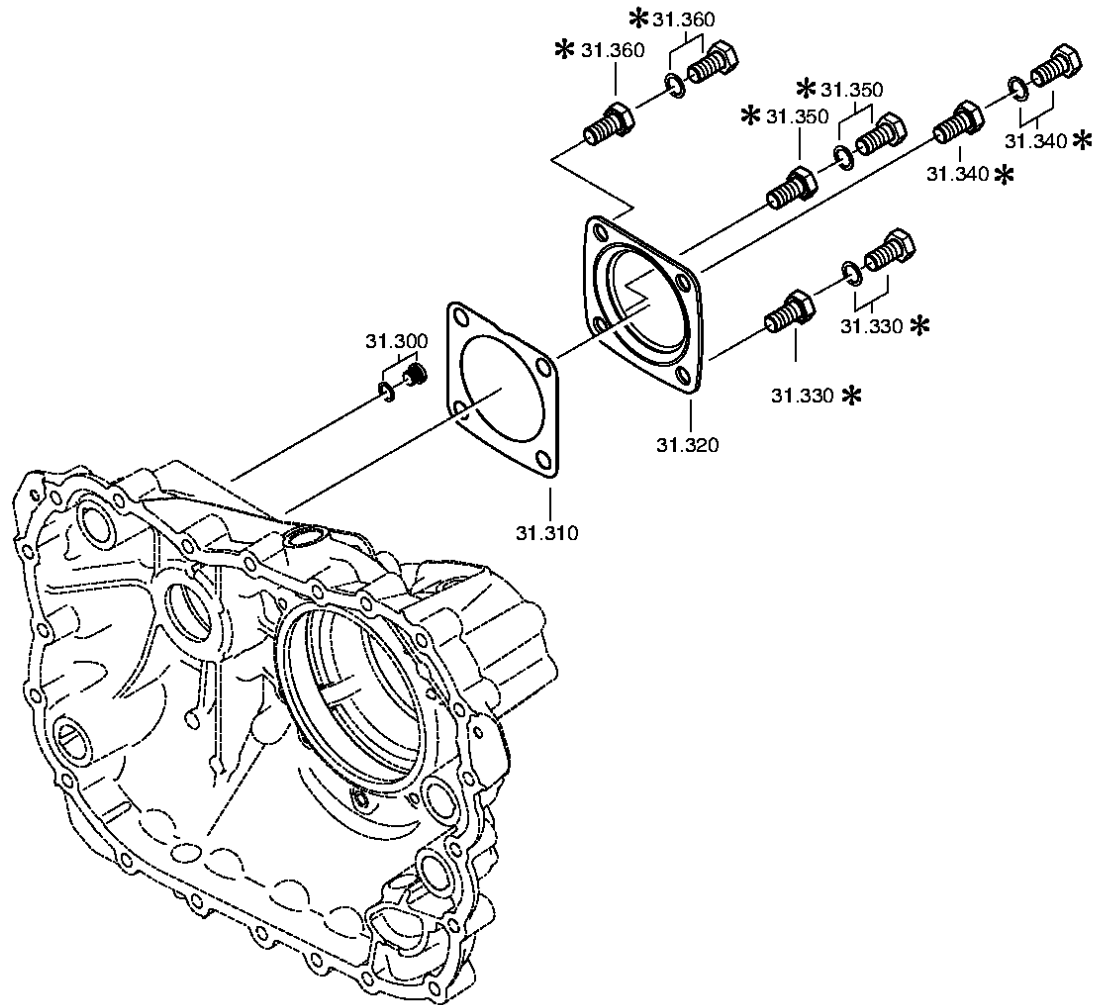
VKF Incidence factor

OTK Optional technical kit

ID Identification (output code)

SP Supplier plant







Pos.	Material number	Name	VKF	Amend. no.	Amend. start	Prod. no.	Material feature / tech. info.	OTK	External material no.	ID	Weight	SP
10	1325.301.065	GEARBOX HOUSING	1		00.00.0000					5	0,000	
20	0750.116.394	BALL BEARING	1		00.00.0000				5 8092 0	3	0,000	
50	1325.331.001	COVER	1		00.00.0000					5	0,000	
60	0501.324.362	GASKET	1		00.00.0000				1831963	5	0,000	
70	---	SHAFT SEAL	1		00.00.0000		105X125X12,0/9,5			3	0,000	
---	0734.319.459	SHAFT SEAL	1		00.00.0000		105X125X12/9,5 FA.CFW		8 8309 0	5	0,000	
---	0750.199.019	GREASE	1		00.00.0000		KLASSE A			3	0,000	
100	---	HEXAGON BOLT	1		00.00.0000		M10X40Z1			3	0,000	
---	0636.015.671	HEXAGON BOLT	1		00.00.0000		M10X40			5	0,000	
110	---	HEXAGON BOLT	1		00.00.0000		M10X40Z1			3	0,000	
---	0636.015.671	HEXAGON BOLT	1		00.00.0000		M10X40			5	0,000	
120	---	HEXAGON BOLT	1		00.00.0000		M10X40Z1			3	0,000	
---	0636.015.671	HEXAGON BOLT	1		00.00.0000		M10X40			5	0,000	
130	---	HEXAGON BOLT	1		00.00.0000		M10X40Z1			3	0,000	
---	0636.015.671	HEXAGON BOLT	1		00.00.0000		M10X40			5	0,000	
140	---	HEXAGON BOLT	1		00.00.0000		M10X40Z1			3	0,000	
---	0636.015.671	HEXAGON BOLT	1		00.00.0000		M10X40			5	0,000	
150	---	HEXAGON BOLT	1		00.00.0000		M10X40Z1			3	0,000	
---	0636.015.671	HEXAGON BOLT	1		00.00.0000		M10X40			5	0,000	
160	---	HEXAGON BOLT	1		00.00.0000		M10X40Z1			3	0,000	
---	0636.015.671	HEXAGON BOLT	1		00.00.0000		M10X40			5	0,000	
170	---	HEXAGON BOLT	1		00.00.0000		M10X40Z1			3	0,000	
---	0636.015.671	HEXAGON BOLT	1		00.00.0000		M10X40			5	0,000	
180	---	HEXAGON BOLT	1		00.00.0000		M10X40Z1			3	0,000	
---	0636.015.671	HEXAGON BOLT	1		00.00.0000		M10X40			5	0,000	
190	---	HEXAGON BOLT	1		00.00.0000		M10X40Z1			3	0,000	
---	0636.015.671	HEXAGON BOLT	1		00.00.0000		M10X40			5	0,000	
250	---	SCREW PLUG	1	Z0001017 6111	01.01.2012	01.01.2012	24X1,5			3	0,000	
---	0736.300.160	SCREW PLUG	1	Z0001017 6110	25.11.2010	25.11.2010	M24X1,5 M24X1,5			5	0,000	

VKF Incidence factor

OTK Optional technical kit

ID Identification (output code)

SP Supplier plant



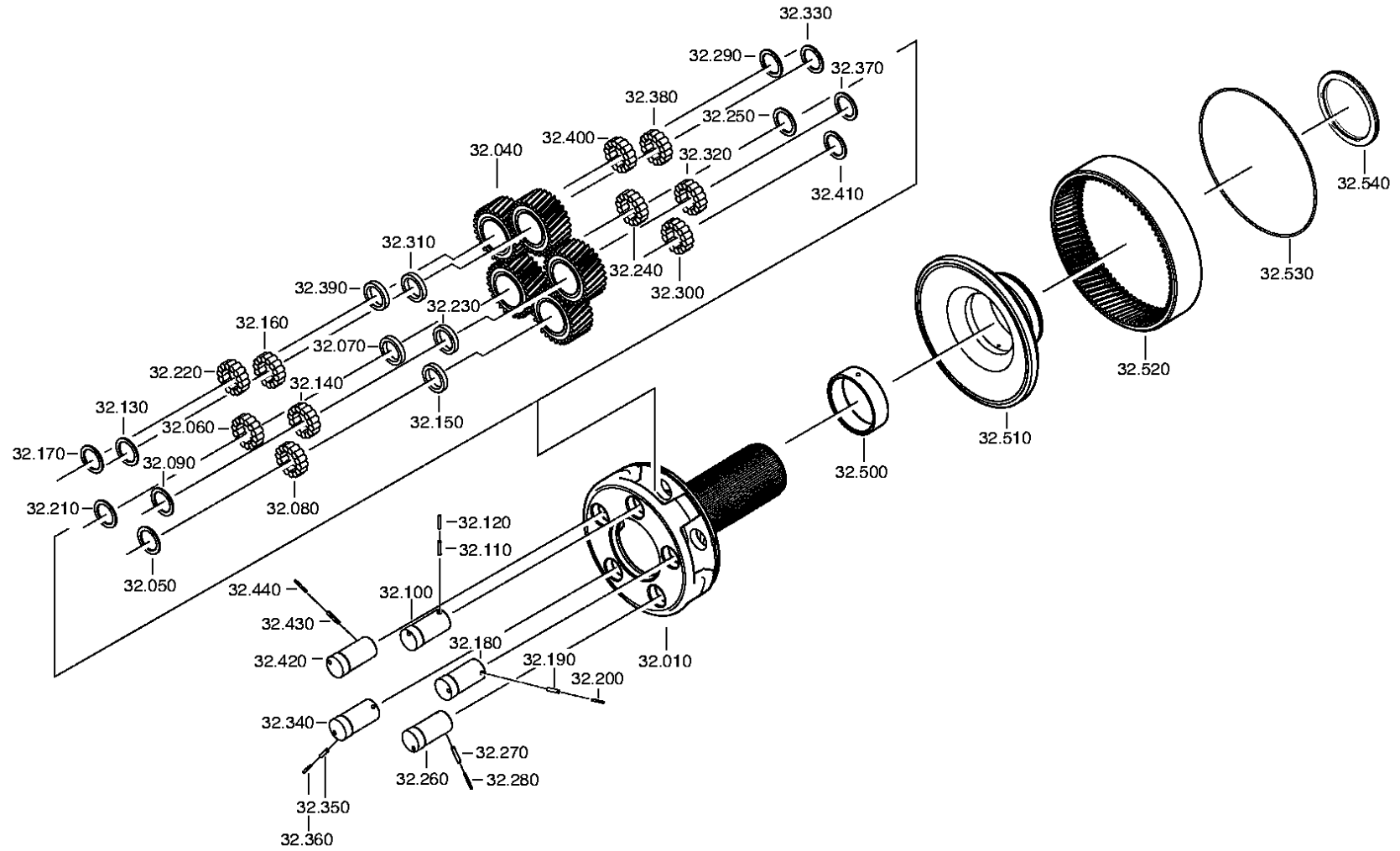
Pos.	Material number	Name	VKF	Amend. no.	Amend. start	Prod. no.	Material feature / tech. info.	OTK	External material no.	ID	Weight	SP
---	0730.008.637	SEALING RING	1	Z0001017 6110	25.11.2010	25.11.2010	A24X29			5	0,000	
300	---	SCREW PLUG	1	C0100435 9F10	00.00.0000	00.00.0000	15N.M*DICHTRING M10X1			3	0,000	
---	0636.100.793	SCREW PLUG	1	Z0001011 1613	01.01.2012	01.01.2012	M10X1			5	0,000	
---	0730.008.055	SEALING RING	1		00.00.0000		A10X14			5	0,000	
310	1238.308.201	GASKET	1		00.00.0000		ENTHALT.IN 1238 308 202(2)		5006880	5	0,000	
320	1328.301.170	COVER	1	Z0000806 8010	01.01.2012	01.01.2012				5	0,000	
330	0636.016.406	HEXAGON BOLT	1	Z0000706 1014	01.01.2012	01.01.2012	M12X25			5	0,000	
340	0636.016.406	HEXAGON BOLT	1	Z0000706 1014	01.01.2012	01.01.2012	M12X25			5	0,000	
350	0636.016.406	HEXAGON BOLT	1	Z0000706 1014	01.01.2012	01.01.2012	M12X25			5	0,000	
360	0636.016.406	HEXAGON BOLT	1	Z0000706 1014	01.01.2012	01.01.2012	M12X25			5	0,000	
400	---	SCREW PLUG	1	Z0001011 1513	01.01.2012	01.01.2012	35N.M*DICHTRING M18X1,5			3	0,000	
---	0636.100.791	SCREW PLUG	1	Z0001011 1521	15.11.2010	15.11.2010	M18X1,5			5	0,000	
---	0634.801.062	SEALING RING	1	Z0001011 1521	15.11.2010	15.11.2010	18X24			5	0,001	

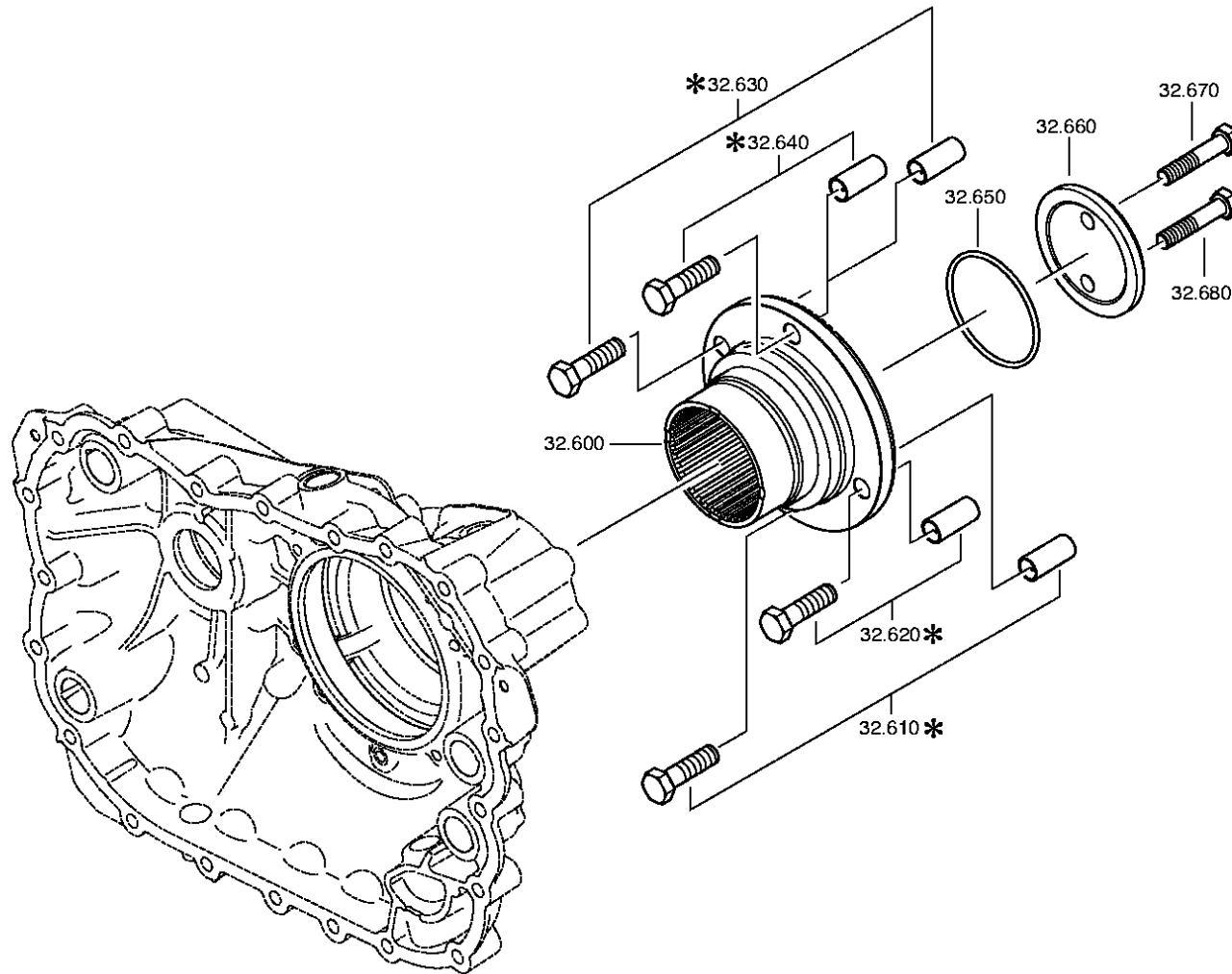
VKF Incidence factor

OTK Optional technical kit

ID Identification (output code)

SP Supplier plant







Pos.	Material number	Name	VKF	Amend. no.	Amend. start	Prod. no.	Material feature / tech. info.	OTK	External material no.	ID	Weight	SP
10	1315.232.017	PLANET CARRIER	1		00.00.0000		KPL.4,565*SV-GP*FL.PROF.90			3	0,000	
40	1315.232.010	PLANET GEAR SET	1		00.00.0000		KPL.			3	0,000	
50	0730.107.168	INTERMWASHER	1		00.00.0000		A=1,00 IN 0730 105 951(2)			5	0,000	
60	1325.232.001	ROLLER	1		00.00.0000		KPL.SATZ*PLANETENRAD			3	0,000	
70	0730.107.168	INTERMWASHER	1		00.00.0000		A=1,00 IN 0730 105 951(2)			5	0,000	
80	1325.232.001	ROLLER	1		00.00.0000		KPL.SATZ*PLANETENRAD			3	0,000	
90	0730.107.168	INTERMWASHER	1		00.00.0000		A=1,00 IN 0730 105 951(2)			5	0,000	
100	1315.332.053	PLANET SHAFT	1		00.00.0000		ENTHALT.IN 1316 332 037(2)			5	0,000	
110	0631.329.051	SLOTPIN	1		00.00.0000		5X26			5	0,002	
120	0631.329.167	SLOTPIN	1		00.00.0000		3X26			5	1	
130	0730.107.168	INTERMWASHER	1		00.00.0000		A=1,00 IN 0730 105 951(2)			5	0,000	
140	1325.232.001	ROLLER	1		00.00.0000		KPL.SATZ*PLANETENRAD			3	0,000	
150	0730.107.168	INTERMWASHER	1		00.00.0000		A=1,00 IN 0730 105 951(2)			5	0,000	
160	1325.232.001	ROLLER	1		00.00.0000		KPL.SATZ*PLANETENRAD			3	0,000	
170	0730.107.168	INTERMWASHER	1		00.00.0000		A=1,00 IN 0730 105 951(2)			5	0,000	
180	1315.332.053	PLANET SHAFT	1		00.00.0000		ENTHALT.IN 1316 332 037(2)			5	0,000	
190	0631.329.051	SLOTPIN	1		00.00.0000		5X26			5	0,002	
200	0631.329.167	SLOTPIN	1		00.00.0000		3X26			5	1	
210	0730.107.168	INTERMWASHER	1		00.00.0000		A=1,00 IN 0730 105 951(2)			5	0,000	
220	1325.232.001	ROLLER	1		00.00.0000		KPL.SATZ*PLANETENRAD			3	0,000	
230	0730.107.168	INTERMWASHER	1		00.00.0000		A=1,00 IN 0730 105 951(2)			5	0,000	
240	1325.232.001	ROLLER	1		00.00.0000		KPL.SATZ*PLANETENRAD			3	0,000	
250	0730.107.168	INTERMWASHER	1		00.00.0000		A=1,00 IN 0730 105 951(2)			5	0,000	
260	1315.332.053	PLANET SHAFT	1		00.00.0000		ENTHALT.IN 1316 332 037(2)			5	0,000	
270	0631.329.051	SLOTPIN	1		00.00.0000		5X26			5	0,002	
280	0631.329.167	SLOTPIN	1		00.00.0000		3X26			5	1	
290	0730.107.168	INTERMWASHER	1		00.00.0000		A=1,00 IN 0730 105 951(2)			5	0,000	
300	1325.232.001	ROLLER	1		00.00.0000		KPL.SATZ*PLANETENRAD			3	0,000	
310	0730.107.168	INTERMWASHER	1		00.00.0000		A=1,00 IN 0730 105 951(2)			5	0,000	
320	1325.232.001	ROLLER	1		00.00.0000		KPL.SATZ*PLANETENRAD			3	0,000	
330	0730.107.168	INTERMWASHER	1		00.00.0000		A=1,00 IN 0730 105 951(2)			5	0,000	

VKF Incidence factor

OTK Optional technical kit

ID Identification (output code)

SP Supplier plant



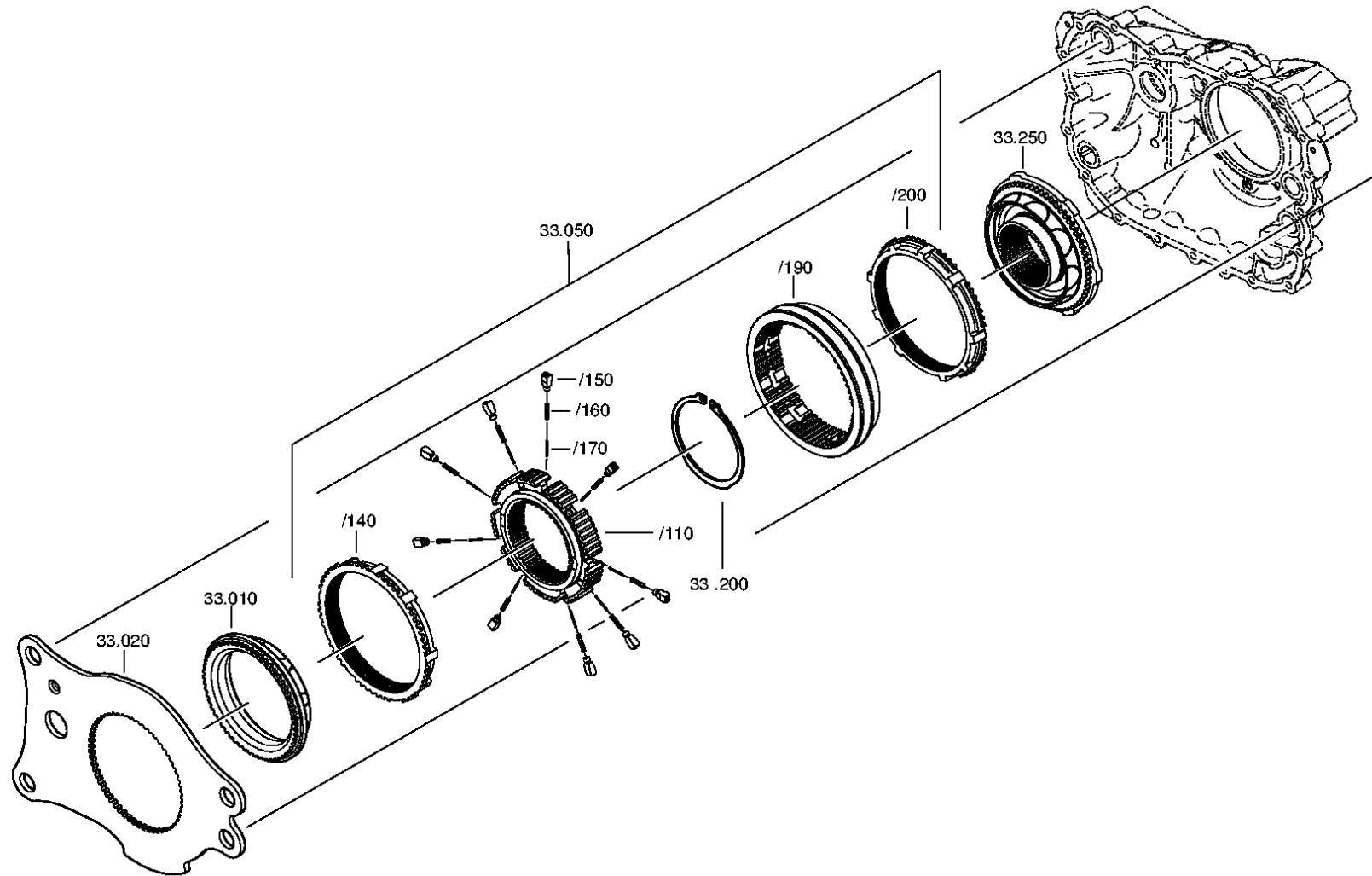
Pos.	Material number	Name	VKF	Amend. no.	Amend. start	Prod. no.	Material feature / tech. info.	OTK	External material no.	ID	Weight	SP
340	1315.332.053	PLANET SHAFT	1		00.00.0000		ENTHALT.IN 1316 332 037(2)			5	0,000	
350	0631.329.051	SLOTPIN	1		00.00.0000		5X26			5	0,002	
360	0631.329.167	SLOTPIN	1		00.00.0000		3X26			5	1	
370	0730.107.168	INTERMWASHER	1		00.00.0000		A=1,00 IN 0730 105 951(2)			5	0,000	
380	1325.232.001	ROLLER	1		00.00.0000		KPL.SATZ*PLANETENRAD			3	0,000	
390	0730.107.168	INTERMWASHER	1		00.00.0000		A=1,00 IN 0730 105 951(2)			5	0,000	
400	1325.232.001	ROLLER	1		00.00.0000		KPL.SATZ*PLANETENRAD			3	0,000	
410	0730.107.168	INTERMWASHER	1		00.00.0000		A=1,00 IN 0730 105 951(2)			5	0,000	
420	1315.332.053	PLANET SHAFT	1		00.00.0000		ENTHALT.IN 1316 332 037(2)			5	0,000	
430	0631.329.051	SLOTPIN	1		00.00.0000		5X26			5	0,002	
440	0631.329.167	SLOTPIN	1		00.00.0000		3X26			5	1	
500	1325.332.011	BUSH	1		00.00.0000					5	0,000	
510	1316.332.130	RING GEAR CARRIER	1		00.00.0000					5	0,000	
520	1315.332.041	RING GEAR	1		00.00.0000		IN 1316 332 055(1)			5	0,000	
530	0730.513.583	LOCKING WIRE	1		00.00.0000		A=3,20 IN 0730 505 052(2)			5	0,000	
540	0735.298.169	AXIAL NEEDLE BEARING	1		00.00.0000		104,5X128,4X10,0 FA.INA		820-400-3080	5	0,000	
600	1325.332.021	OUTPUT FLANGE	1		00.00.0000					5	0,000	
650	0634.313.805	O-RING	1		00.00.0000		82X4			5	0,000	
660	1312.332.028	WASHER	1		00.00.0000					5	0,000	
670	0636.011.777	HEXAGON BOLT	1	Z0000729 2012	01.01.2012	01.01.2012	M12X60			5	0,000	
680	0636.011.777	HEXAGON BOLT	1	Z0000729 2012	01.01.2012	01.01.2012	M12X60			5	0,000	

VKF Incidence factor

OTK Optional technical kit

ID Identification (output code)

SP Supplier plant





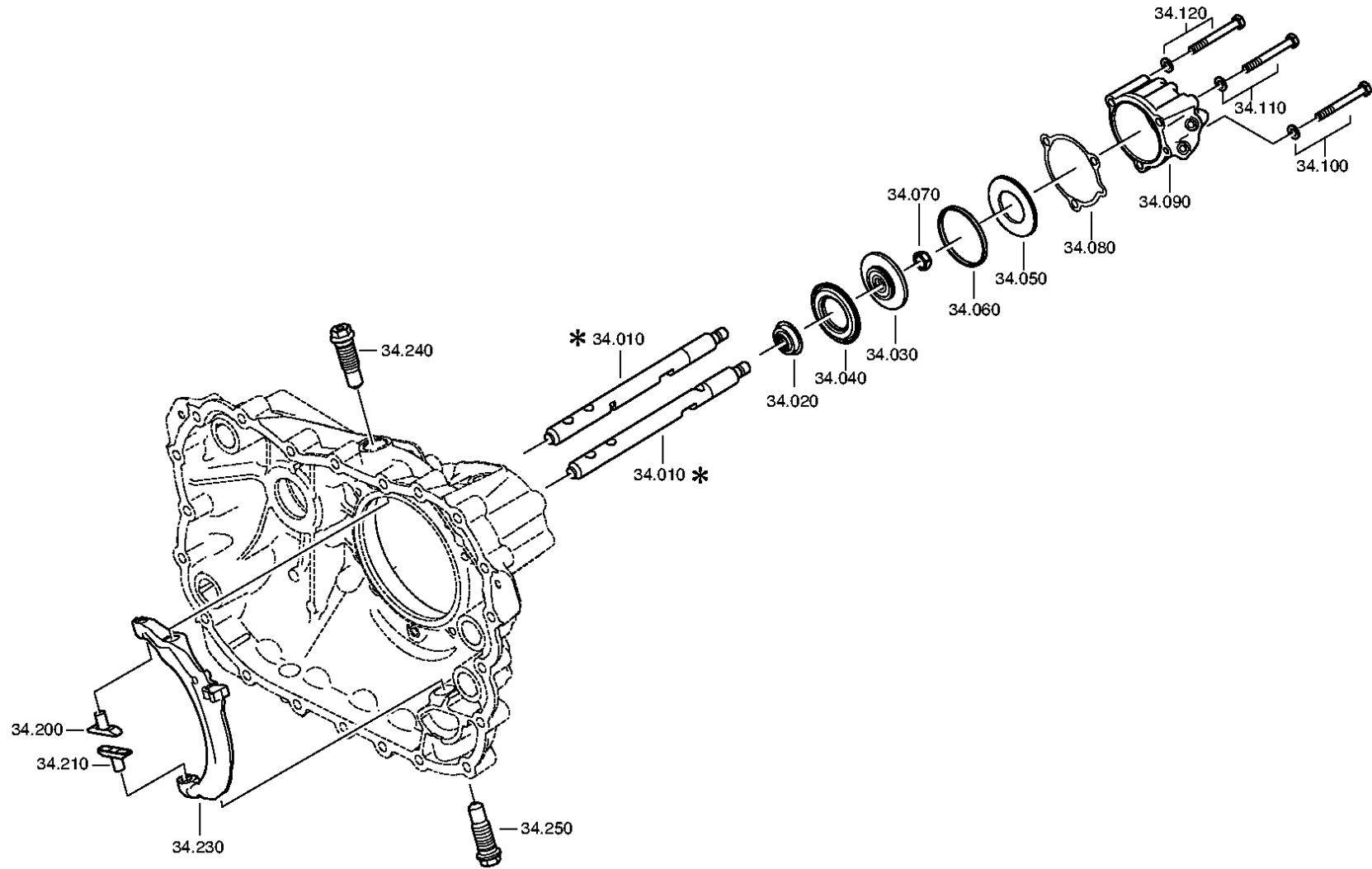
Pos.	Material number	Name	VKF	Amend. no.	Amend. start	Prod. no.	Material feature / tech. info.	OTK	External material no.	ID	Weight	SP
10	1296.333.050	CLUTCH BODY	1		00.00.0000		ENTHALT.IN 1296.333.053(1)			5	0,000	
20	1325.333.016	PLATE	1		00.00.0000					5	0,000	
50	1325.233.008	SYNCHRONIZER	1		00.00.0000		KPL.GP*DRUCKGUSS			3	0,000	
/110	1313.333.001	SYNCHROBODY	1		00.00.0000		ENTHALT.IN 1296 333 014(1)			5	0,000	
/140	1296.333.045	SYNCHRORING	1		00.00.0000					5	0,000	
/150	1240.304.278	PRESSURE PIECE	9		00.00.0000				1334510410	5	0,000	
/160	0732.040.385	COMPRSPRING	9		00.00.0000				0971040080	5	0,000	
/170	0732.040.386	COMPRSPRING	9		00.00.0000				097102000	5	0,000	
/190	1325.333.018	SLIDING SLEEVE	1		00.00.0000					5	0,000	
/200	1296.333.045	SYNCHRORING	1		00.00.0000					5	0,000	
200	0630.501.175	RETAINING RING	1		00.00.0000		125X3,7			5	0,000	
250	1325.233.007	CLUTCH BODY	1		00.00.0000		KPL.			3	0,000	

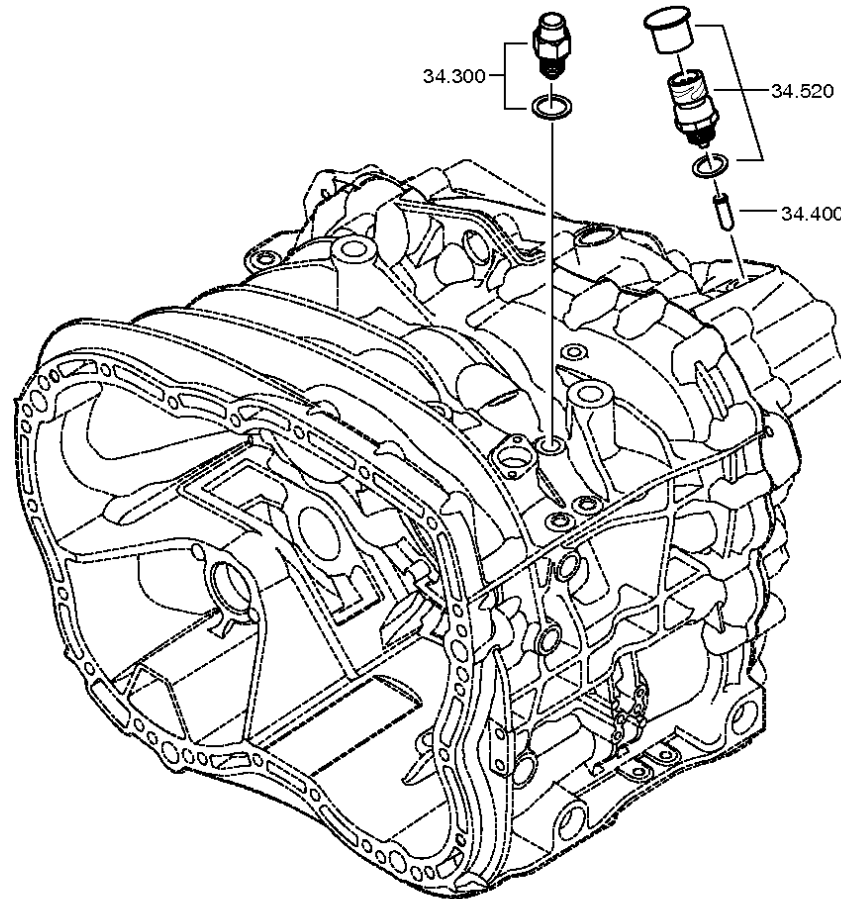
VKF Incidence factor

OTK Optional technical kit

ID Identification (output code)

SP Supplier plant







Pos.	Material number	Name	VKF	Amend. no.	Amend. start	Prod. no.	Material feature / tech. info.	OTK	External material no.	ID	Weight	SP
10	1325.334.017	GEAR SHIFT RAIL	1		00.00.0000					5	0,000	
20	0750.112.253	FLANGE PACKING	1		00.00.0000		25X40X15			3	0,000	
30	---	PISTON	1		00.00.0000		GP			3	0,000	
---	1315.334.034	PISTON	1		00.00.0000		ENTHALT.IN 1315 334 040(2)			5	0,000	
---	1315.334.063	PISTON	1		00.00.0000					5	0,000	
40	0734.307.294	SEALING RING	1		00.00.0000		49X91X7,4 FA.KACO			5	0,000	
50	0734.307.294	SEALING RING	1		00.00.0000		49X91X7,4 FA.KACO			5	0,000	
60	0750.112.066	GUIDE RING	1		00.00.0000				5 5131 0	3	0,000	
70	0737.300.037	LOCKING NUT	1	Z0000892 9010	01.01.2012	01.01.2012	MS16X1,5			5	0,000	
80	0501.322.778	GASKET	1		00.00.0000				1831950	5	0,000	
90	1325.334.013	CYLINDER	1		00.00.0000		GP			5	0,000	
100	---	HEXAGON BOLT	1	Z0000734 9210	01.01.2012	01.01.2012	M10X90			3	0,000	
---	0636.015.688	HEXAGON BOLT	1	Z0000734 9212	11.10.2010	11.10.2010	M10X90			5	0,000	
---	0630.100.294	WASHER	1	Z0000715 8111	01.01.2012	01.01.2012				5	0,000	
110	---	HEXAGON BOLT	1	Z0000734 9210	01.01.2012	01.01.2012	M10X90			3	0,000	
---	0636.015.688	HEXAGON BOLT	1	Z0000734 9212	11.10.2010	11.10.2010	M10X90			5	0,000	
---	0630.100.294	WASHER	1	Z0000715 8111	01.01.2012	01.01.2012				5	0,000	
120	---	HEXAGON BOLT	1	Z0000734 9210	01.01.2012	01.01.2012	M10X90			3	0,000	
---	0636.015.688	HEXAGON BOLT	1	Z0000734 9212	11.10.2010	11.10.2010	M10X90			5	0,000	
---	0630.100.294	WASHER	1	Z0000715 8111	01.01.2012	01.01.2012				5	0,000	
200	1325.334.008	SLIDING PAD	1		00.00.0000		GP			5	0,000	
210	1325.334.008	SLIDING PAD	1		00.00.0000		GP			5	0,000	

VKF Incidence factor

OTK Optional technical kit

ID Identification (output code)

SP Supplier plant



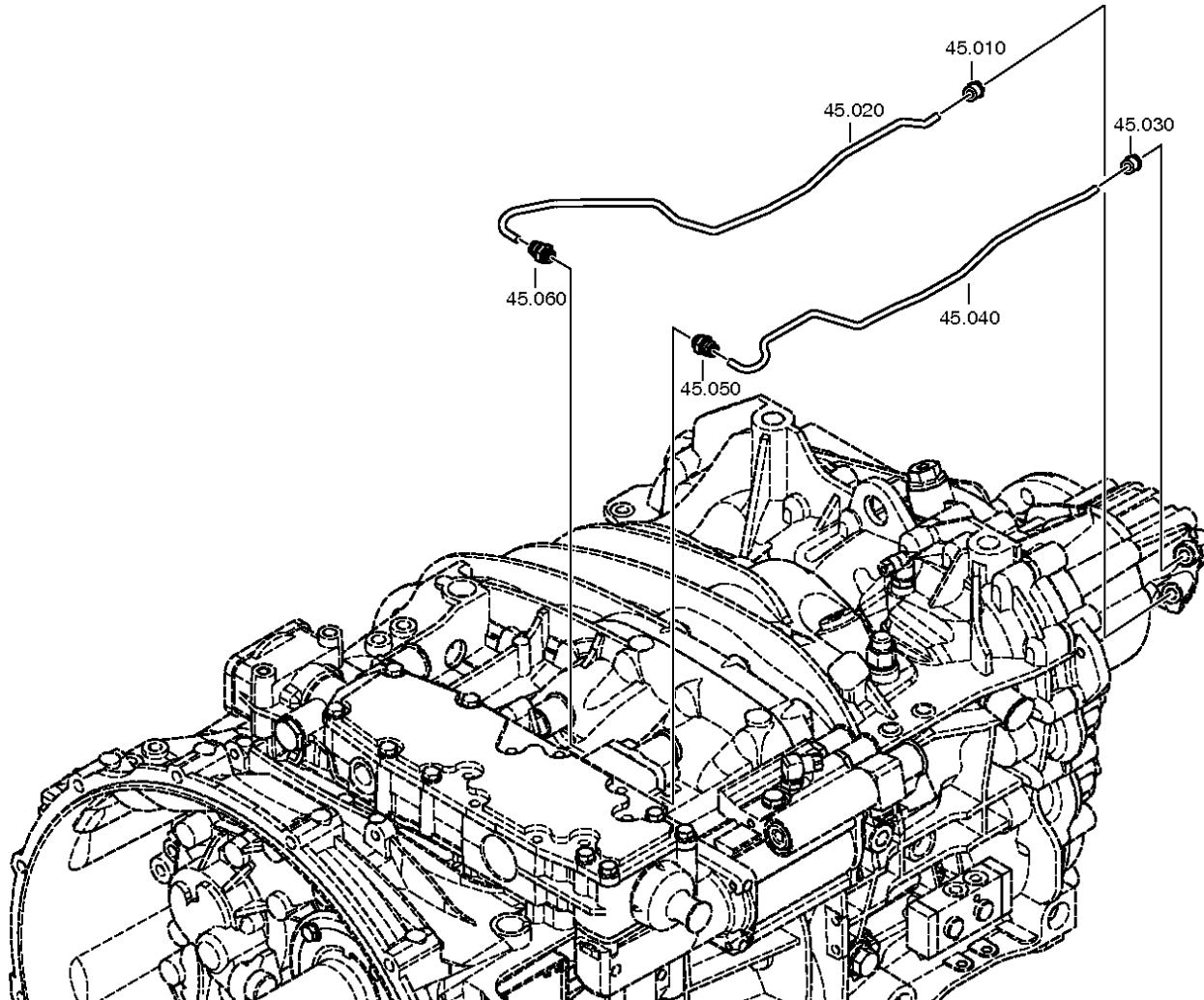
Pos.	Material number	Name	VKF	Amend. no.	Amend. start	Prod. no.	Material feature / tech. info.	OTK	External material no.	ID	Weight	SP
230	1325.334.007	GEAR SHIFT FORK	1		00.00.0000		GP			5	0,000	
240	---	ARTICULATION BOLT	1		00.00.0000		O.SCHEIBE M24X1,5 SK6			3	0,000	
---	1315.334.074	ARTICULATION BOLT	1	Z0000407 5610	01.07.2011	01.07.2011				5	0,000	
250	---	ARTICULATION BOLT	1		00.00.0000		O.SCHEIBE M24X1,5 SK6			3	0,000	
---	1315.334.074	ARTICULATION BOLT	1	Z0000407 5610	01.07.2011	01.07.2011				5	0,000	
300	---	DETENT PLUNGER	1		00.00.0000		145N*50N.M			3	0,000	
---	1324.207.035	DETENT PLUNGER	1		00.00.0000		KPL. *145 N			3	0,000	
---	0730.008.604	SEALING RING	1		00.00.0000		A16X22			5	0,000	
302	0750.199.019	GREASE	1		00.00.0000		KLASSE A			3	0,000	
400	1295.212.006	PIN	1		00.00.0000		KPL.			3	0,000	
402	0750.199.019	GREASE	1		00.00.0000		KLASSE A			3	0,000	
520	---	SWITCH	1		00.00.0000		SCHL *45N.M*DICHTRING* BAJONETT*SCHUTZKAPPE			3	0,000	
---	0501.210.058	SWITCH	1		00.00.0000		KPL.		1864900531	5	0,000	
---	0634.801.062	SEALING RING	1		00.00.0000		18X24			5	0,001	
---	0700.300.427	PROTECTING CAP	1		00.00.0000					5	0,005	

VKF Incidence factor

OTK Optional technical kit

ID Identification (output code)

SP Supplier plant





Pos.	Material number	Name	VKF	Amend. no.	Amend. start	Prod. no.	Material feature / tech. info.	OTK	External material no.	ID	Weight	SP
10	0501.324.029	MALE COUPLING	1		00.00.0000					5	0,000	
20	1325.345.009	PIPE	1		00.00.0000		H-H			5	0,000	
30	0501.324.029	MALE COUPLING	1		00.00.0000					5	0,000	
40	1325.345.008	PIPE	1		00.00.0000		E13MP			5	0,000	
50	0501.326.099	MALE COUPLING	1		00.00.0000		M14X1,5 ROHR 8MM			5	0,000	
60	0501.326.099	MALE COUPLING	1		00.00.0000		M14X1,5 ROHR 8MM			5	0,000	

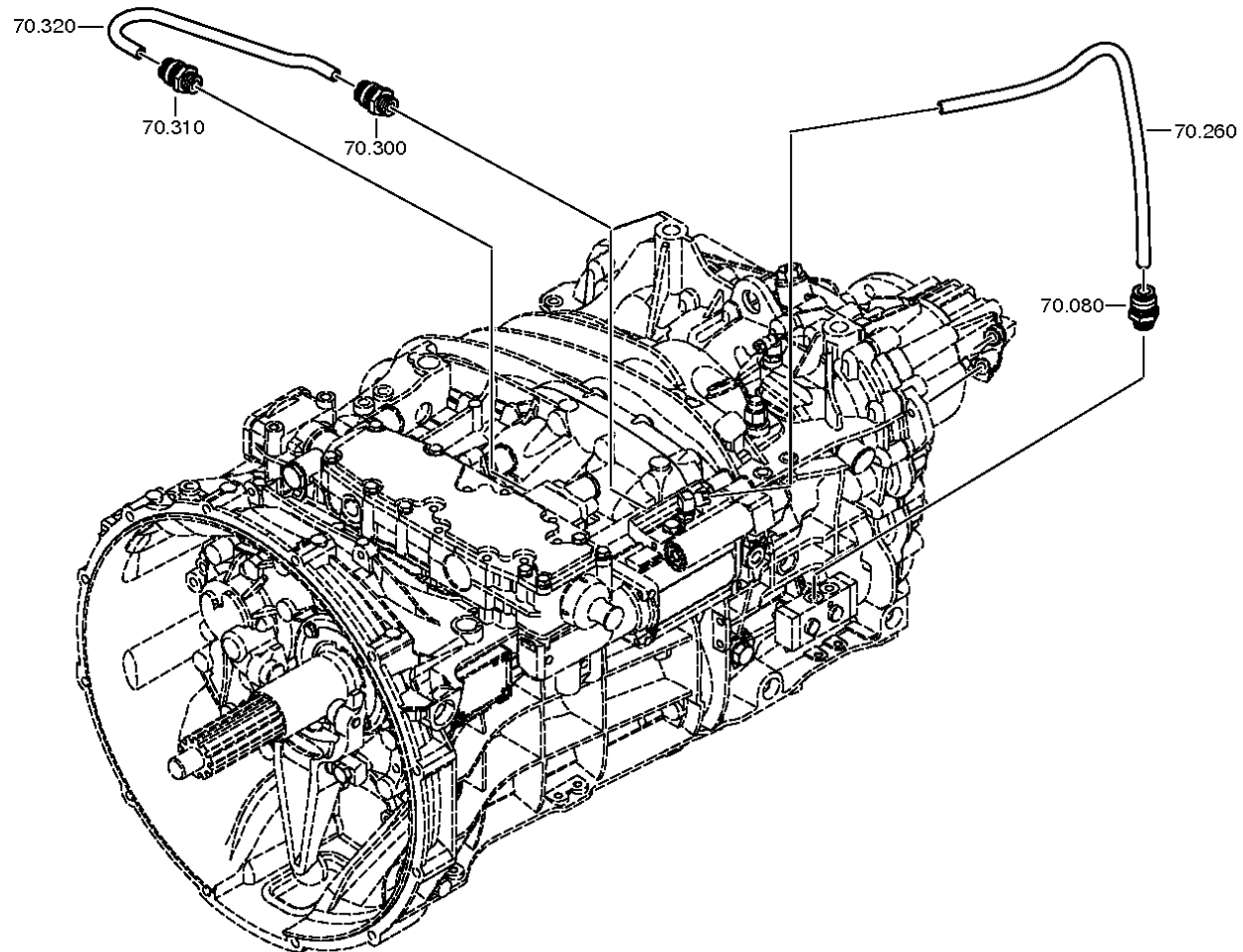
VKF Incidence factor

OTK Optional technical kit

ID Identification (output code)

SP Supplier plant

Material number: 1367.002.030 16 S 2220 TO /
Plant: 161.70.06-1 SHUT-OFF VALVE
Material-assembly-group-no: 1356.170.009





Pos.	Material number	Name	VKF	Amend. no.	Amend. start	Prod. no.	Material feature / tech. info.	OTK	External material no.	ID	Weight	SP
80	0501.324.666	MALE COUPLING	1		00.00.0000		M12X1,5 ROHR 8MM DROSSEL			5	0,000	
260	0730.301.003	PIPE	1	Z0000662 6010	15.01.2010	15.01.2010	8X1X450 8X1X450			5	0,000	
300	0501.324.477	MALE COUPLING	1		00.00.0000		M12X1,5 ROHR 8MM			5	0,000	
310	0501.324.477	MALE COUPLING	1		00.00.0000		M12X1,5 ROHR 8MM			5	0,000	
320	1325.345.029	PIPE	1		00.00.0000					5	0,000	

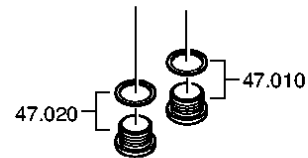
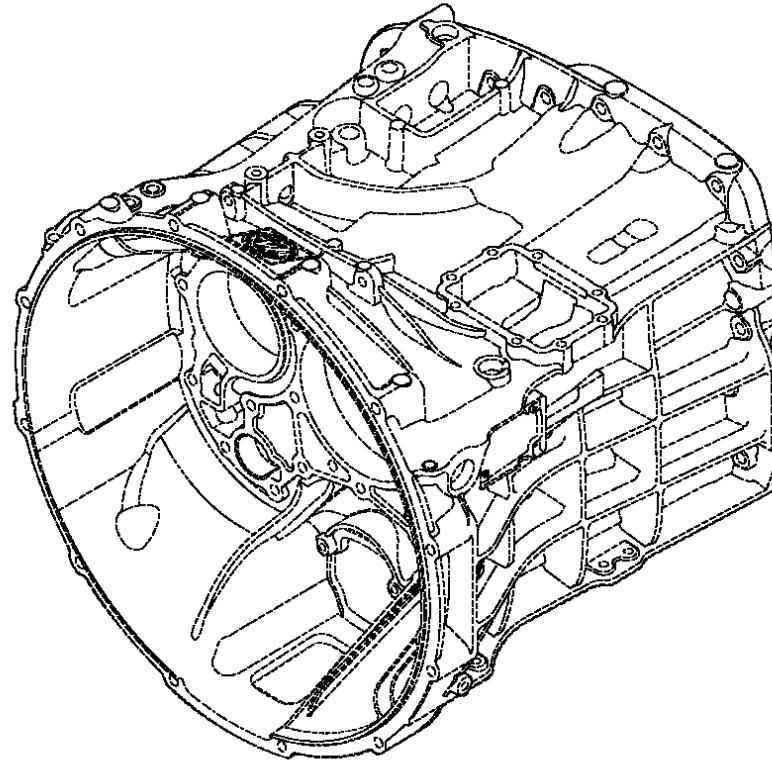
VKF Incidence factor

OTK Optional technical kit

ID Identification (output code)

SP Supplier plant

Material number: 1367.002.030 16 S 2220 TO /
Plant: 161.90.08 HEAT EXCHANGER
Material-assembly-group-no: 1325.147.001





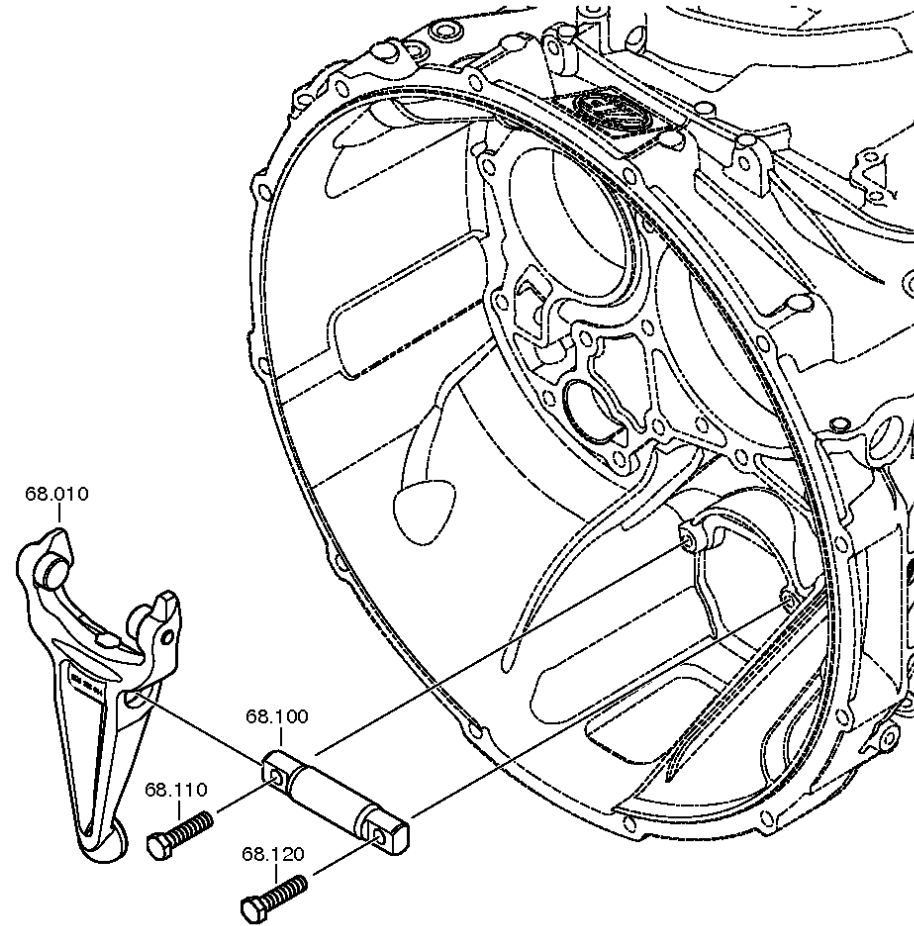
Pos.	Material number	Name	VKF	Amend. no.	Amend. start	Prod. no.	Material feature / tech. info.	OTK	External material no.	ID	Weight	SP
10	---	SCREW PLUG	1	Z0001016 4013	01.01.2012	01.01.2012	50N.M*DICHTRING M22X1,5			3	0,000	
---	0636.100.824	SCREW PLUG	1	Z0001016 4019	01.12.2010	01.12.2010	M22X1,5			5	0,000	
---	0730.009.515	SEALING RING	1	Z0001016 4019	01.12.2010	01.12.2010	A22X27			5	0,000	
20	---	SCREW PLUG	1	Z0001016 4013	01.01.2012	01.01.2012	50N.M*DICHTRING M22X1,5			3	0,000	
---	0636.100.824	SCREW PLUG	1	Z0001016 4019	01.12.2010	01.12.2010	M22X1,5			5	0,000	
---	0730.009.515	SEALING RING	1	Z0001016 4019	01.12.2010	01.12.2010	A22X27			5	0,000	

VKF Incidence factor

OTK Optional technical kit

ID Identification (output code)

SP Supplier plant





Pos.	Material number	Name	VKF	Amend. no.	Amend. start	Prod. no.	Material feature / tech. info.	OTK	External material no.	ID	Weight	SP
10	1328.268.012	RELEASE FORK	1	Z0000440 2510	25.11.2010	25.11.2010	KPL. MIT ROLLE* VERSCHLEISSOPTIMIERT			3	0,000	
/110	1328.368.044	RELEASE FORK	1	Z0000440 2511	29.06.2010	29.06.2010				5	0,000	
/120	0501.306.220	BALL CUP	1	Z0000440 2511	29.06.2010	29.06.2010			0501 306 220	5	0,000	
/122	0671.190.050	GREASE	3	Z0000440 2511	29.06.2010	29.06.2010				5	0,000	
/130	0501.323.199	BEARING BUSH	1	Z0000440 2511	29.06.2010	29.06.2010				5	0,000	
/150	0501.214.560	CAM FOLLOWER	1	Z0000440 2511	29.06.2010	29.06.2010	KPL.			5	0,000	
/160	0501.214.560	CAM FOLLOWER	1	Z0000440 2511	29.06.2010	29.06.2010	KPL.			5	0,000	
100	1328.368.001	RELEASE SHAFT	1		00.00.0000				871180008	5	0,000	
110	0636.016.416	HEXAGON BOLT	1	Z0000728 4510	01.07.2011	01.07.2011	M12X50			5	0,000	
120	0636.016.416	HEXAGON BOLT	1	Z0000728 4510	01.07.2011	01.07.2011	M12X50			5	0,000	

VKF Incidence factor

OTK Optional technical kit

ID Identification (output code)

SP Supplier plant